



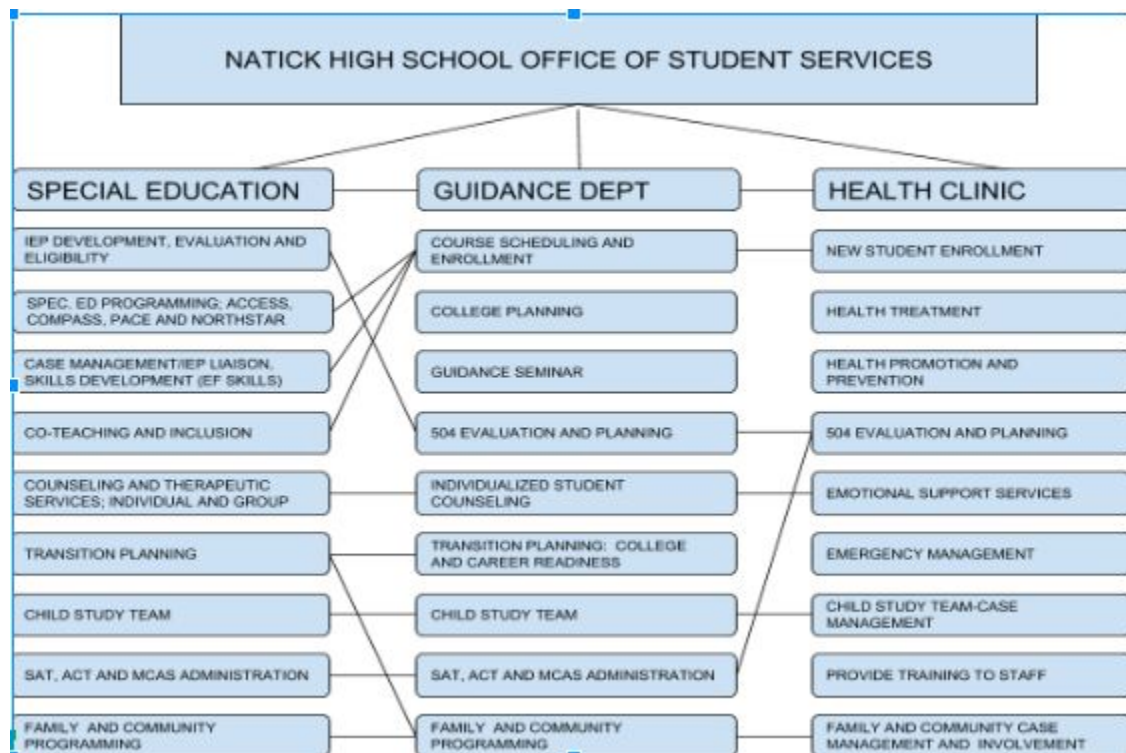
NATICK HIGH SCHOOL STUDENT SERVICES :

The Collaboration Among Natick High School
Special Education, Guidance and Nursing Depts.
“We’ve got you covered”





STUDENT SERVICES OVERVIEW





SUPPORT SYSTEMS PROVIDED THROUGH STUDENT SERVICES

- Counseling and Clinical Staff: Provide 1:1, “as needed” and group counseling
- Social/Emotional Programming: PACE, Compass, Northstar [NHS Program Descriptions](#)
- School Community Coach/Mentor
- Transition Planning; Transitions Course, career planning, college planning, disability awareness and self-determination
- Child Study Team/ ACT Team- identify students in need to provide intervention and supports in and out of the classroom
- Guidance Seminar
- Parent Programs; Transition Planning, College Planning, Disability Services, etc.
- Wellness Committee
- Trusted Adult Work
- Redefining Senior Year/Profile of a Graduate
- New Student Orientation
- Mentorship Program
- Athletics and Extracurricular Activities
- School Wide Assemblies addressing mental health awareness, substance abuse, etc.
- Social Pragmatic Groups
- Peer Mentoring





COMMUNITY BASED PARTNERSHIPS

- Interface
- Advocates/Psychiatric Emergency Services
- Newton-Wellesley Resilience Project-Programming and Consultation
- Natick Together for Youth
- Natick Service Council
- Hey NHS
- SBIRT Screening
- Child Behavioral Health Services-Wayside
- Case Management meetings with outside counselors





NHS COUNSELING SERVICE DATA

COUNSELING SERVICES AND PROGRAM ENROLLMENT								
Year	# Student Hospitalization	# IEP counseling cases	# Non-IEP counseling cases	Total # Counseling	# Compass Students	# CST Referrals	#PACE students	# Risk Assess.
2015-2016	33	104	37	141	22	69	29	3HS
2016-2017	27	86	40	126	11	74	29	2 HS
2017-2018	35	68	51	119	15	72	32	1HS/4 DW
2018-2019 - to date	8	88	53	141	21	24	14	5HS/8DW



NORTHSTAR ENROLLMENT

NorthStar Program Enrollment

Year Of Graduation	Total Students	North Star	Compass	Access	Other (Mainstream)
2018-19	29	17	4	5	3
2017-18	37	28	6	0	3
2016-17	34	22	11	0	1
2015-16	29	18	10	0	1
2014-15	38	26	11	0	1



ABSENTEEISM

SCHOOL REFUSAL/CHRONIC ABSENTEEISM	
SY	20+ absences
15-16	68 student
16-17	74 students
17-18	88 Students
18-19	9 students as of 12/3- 36 students with 10+ or 16%+ of the year to date

*Addressed through Administration, Child Study Team and Clinical Staff with specific intervention and support implementation



STUDENT VISITS TO HEALTH CLINIC

SY	TOTAL STUDENT VISITS	STUDENTS WITH >10 MENTAL HEALTH VISITS
15-16	8751	159
16-17	8191	176
17-18	9755	212
18-19	2536 AS OF 11/14	31 AS OF 11/14



NEW TO NATICK HIGH STUDENTS

New to Natick Student Transfers				
SY	Total # of Transfer Students	# of transfer students who receive special education	# of students returning from OOD or Unilateral Placements	# of students tuition in from other districts
15-16	67	12	1	3
16-17	75	17	3	3
17-18	66	8	5	0
18-19	73	25	5	3



ENGLISH LANGUAGE LEARNERS ENROLLMENT

SY	Active ELLs	Opt-Outs	Monitors
15-16	21	1	3
16-17	26	1	8
17-18	34	1	9
18-19	27	1	18



SPECIAL EDUCATION REFERRALS

*Comparable districts have an average of 11 initial evaluation during the 18-19 School Year

Special Education Enrollment and Initial Referrals								
	Total Student s on IEP's	Emotion al	SLD	Health	Commu nication	Autism	Other	Initial IEP Referral s
15-16	218	43	58	49	21	21	26	60
16-17	227	47	62	52	23	23	20	33
17-18	239	51	63	59	24	20	23	35
18-19	242	56	57	62	23	19	25	33 (by Dec 3)



504 ACCOMMODATION PLANS

504 Initial Referrals (Non-medical)						
	Total Students on 504	Mental Health referrals	Health/AD HD referrals	Mental Health +ADHD	Other Non-medical	Total Referrals
15-16	52	3	4	4	1	12
16-17	50	5	3	1	0	9
17-18	45	8	7	2	1	18
18-19 (YTD)	42		3	1	3	7



WHAT DOES THIS TELL US?

- NHS offers excellent programming, services and supports to address students social/emotional, behavioral and academic needs
- NHS collaborates in and out of the school community to provide interventions and services to support students in and out of the school environment.
- NHS identifies, evaluates and intervenes when students present with academic and social/emotional challenges



WHAT DOES THIS INFORMATION TELL US?

- Student needs related to social/emotional or mental health challenges are increasing
- Guidance counselors and nursing staff are utilizing significant school day time to address these needs
- Students and families are seeking and accessing more supports and services through school based counseling, special education and programming
- Absenteeism/school refusal continues to be a growing area of need



CONTINUED RESOURCES NEEDED TO SUPPORT OUR STUDENTS

- Social Emotional Learning Tiered Instruction which includes, general education counseling groups to address anxiety, depression, school phobia, etc.
- Addition of counseling staff to specifically address general education students; substance use expertise - 1.0 Counselor
- Additional Guidance staff - .5 Guidance Counselor
- Addition of Co-taught and small group special education classes to address increase of students with IEP's - addition of 1 teacher



QUESTIONS FOR US?

