



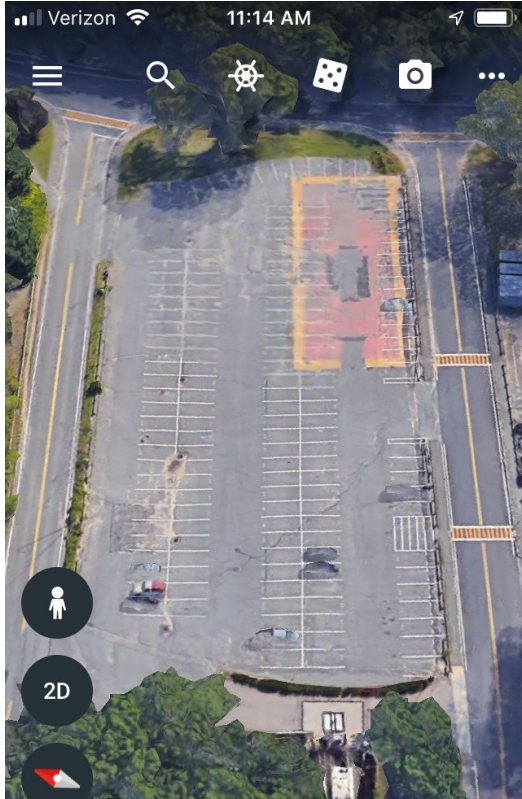
NATICK HIGH SCHOOL

STUDENT PARKING - OCTOBER 15, 2018

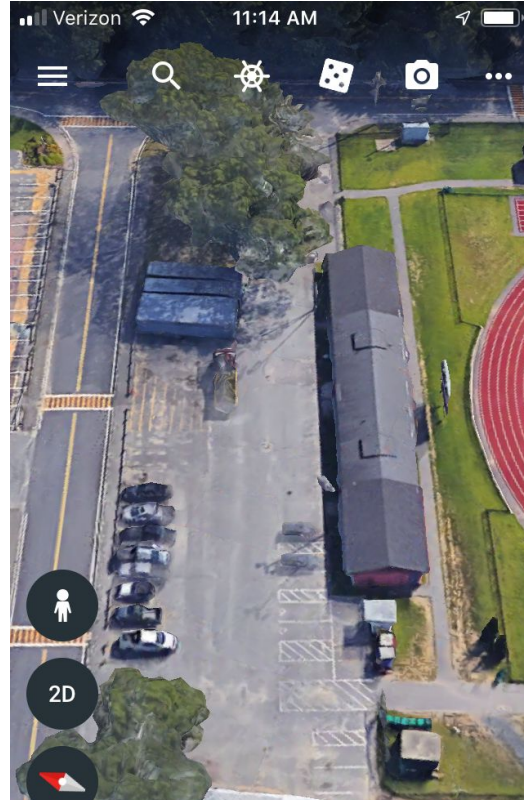




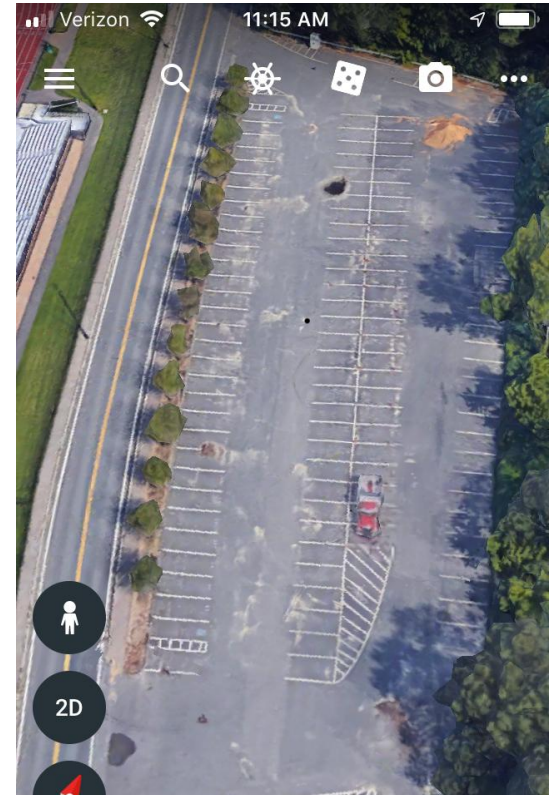
STUDENT PARKING LOTS: NUMBER OF SPACES



Memorial Lot: 162



Memorial Field: 20



Mahan Lot: 124



STUDENT PARKING AT NHS

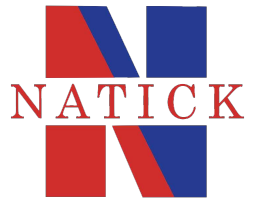
- Student parking spaces (306 total)
 - 162 spaces in the Memorial Field Lot (senior lot)
 - 20 spaces at Memorial Field
 - 124 spaces in the Mahan Field (junior lot)
- Student drivers (323 students self-report that they currently drive to school)
 - 233 Seniors currently drive to school
 - 90 Juniors currently drive to school
- Student drivers this year (504 students self-report that will drive to school at some point)
 - 29 Seniors do not currently drive to school but will at some point
 - 101 Juniors do not currently drive to school but will at some point
 - 51 Sophomores do not currently drive to school but will at some point



PROPOSED STUDENT PARKING PASSES

All students to apply for a Parking Pass

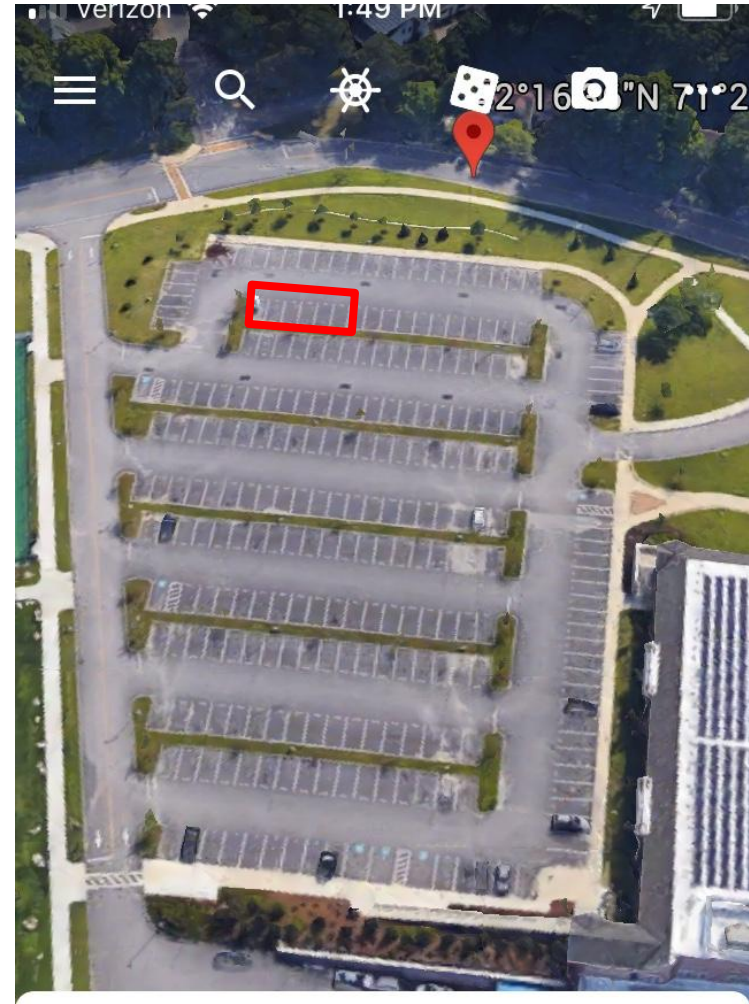
- Students must show a valid license and registration
- All Seniors will be issued a WHITE decal
- Juniors will be issued RED decal by lottery
- Sophomores will not be offered parking at school
- \$50 annual fee - revenue to support Student Activities
- Memorial (Senior) Lot will now be called the WHITE lot (white decals)
- Mahan (Junior) Lot will now be called the RED lot (red decals and white decal overflow)



PROPOSED HIGH OCCUPANCY PARKING

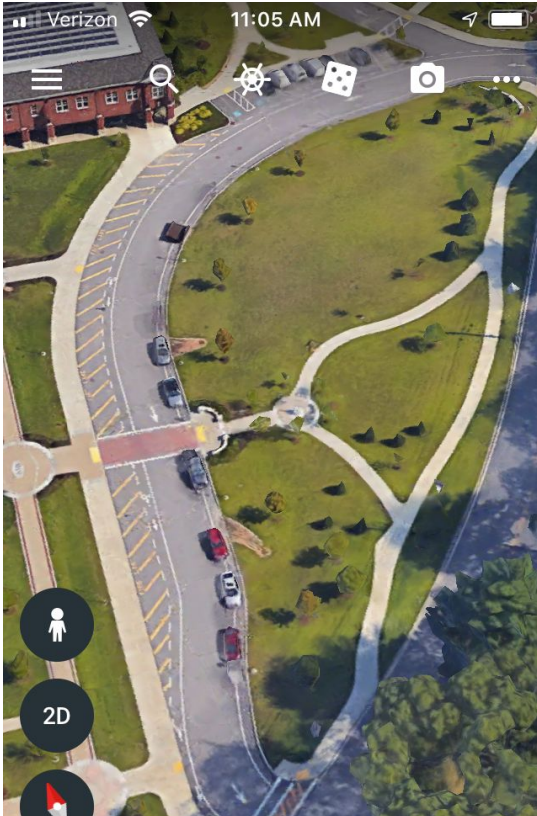
Encourage student car-pooling

- Students who routinely drive to school with three or more occupants may apply for HOV parking
- Parents will be asked to sign a form verifying HOV status
- Up to six spaces in the Faculty/Visitor Lot reserved for HOV
- Students pay the same \$50 fee
- Decals will be issued by lottery if greater than six students apply

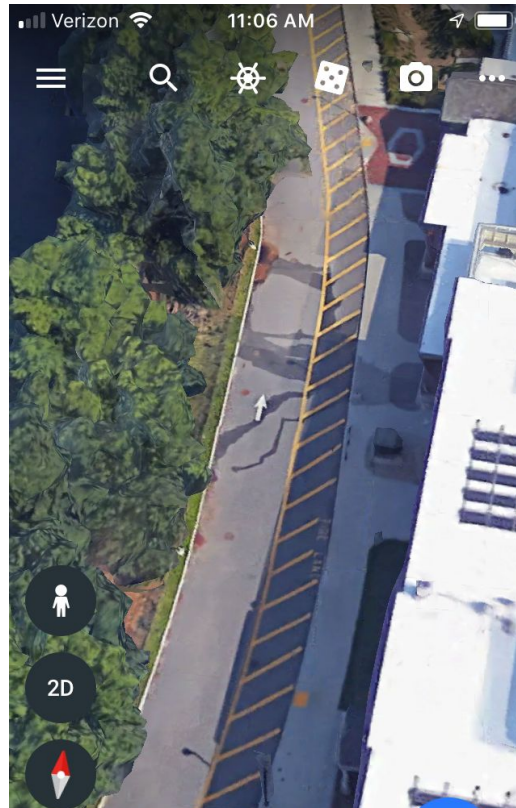




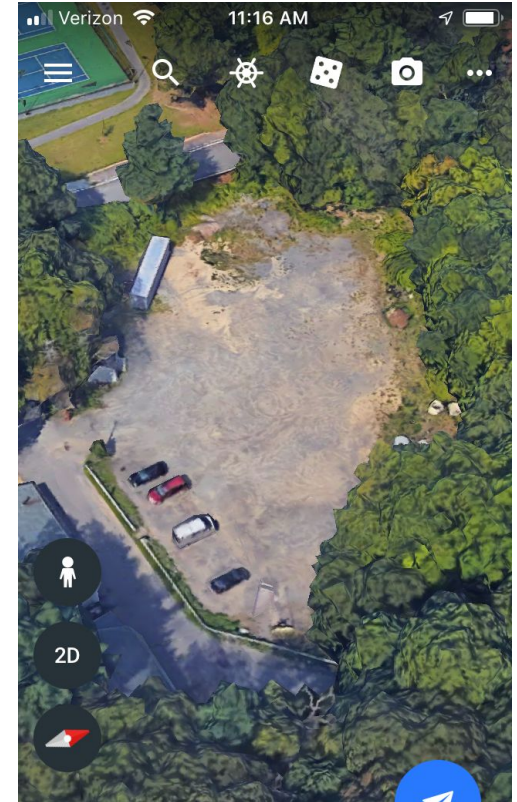
PROPOSED PARKING: NUMBER OF SPACES



Front Loop Left Curb: 17



Back Loop Left Curb: 15



Maple Street: 60