



NATICK PUBLIC SCHOOLS



SECONDARY SCHOOLS SCHOOL IMPROVEMENT PLAN 2018-2019





GOAL 1 (WELLNESS)

District Goal : Develop a systematic, developmentally appropriate social-emotional learning (SEL) and healthy living framework for student learning and parent engagement and partnership.

Strategic Objective: Build relationships with students, students with each other, and staff with each other

Building Goal #1: Based on the Metrowest Health Survey administered in 2016-2017 and Wellness survey administered in 2017-2018 school year, there are three areas we will focus on improving: school attendance, student connectivity with adults and sources of stress. We intend to decrease the number of unexcused absences by 5%, increase the number of students who will talk to adults at school by 5%, and reducing stress for students by 5% as measured by the 2019 MetroWest Survey.

*The intended outcome is to promote a healthy, emotionally supportive, and positive climate & culture for our students and staff.



NATICK GOAL #1

| Goals | Trends | Actions Steps |
|--|---|---|
| School Attendance | -Based on DESE report, for the past 3 years, on average 19% of students are absent over 10 days. | -Monthly attendance meetings with guidance & nurses. -Contacting families after 5 unexcused absences -School Resource Officer |
| Students talking to adults in the school about difficulties (personal problems, bullying, cyber-bullying, mental health) | Based on School Connectivity & Metrowest Health survey: -75% of students said they felt close to people at school -69% of the students said they felt they had an adult they could talk to 83.3% of students said that they felt connected to at least one adult within the school. 86.7% said that they felt they had at least one adult they could talk to. | -Guidance lessons (Social Emotional Learning) -SOS and depressions screenings -3 C's and PBIS -Fitness -Mentoring program |
| Sources of stress | 49% of MS students says that are worried/stressed about school issues 6% increase in students feeling life is “very” stressful since 2006. | -Extra-Curricular Activities including sports teams SPARK organization resources |
| Natick Public Schools • 13 East Central Street, Natick, MA • 01760 • Visit us online: www.natickps.org | | |



GOAL 2

(STUDENT GROWTH IN MATH AND READING)

District Goal : Excel in academic achievement, and Profile of a Natick Graduate (POG) competencies for all groups and sub groups of students.

Strategic Objective: Use assessment data to follow learners and make instructional decisions.

Building Goal: By the end of the 2018-2019 school year, each grade level will show at least a 3% increase in their median student growth percentile measured by the Renaissance STAR Assessments in both Math & Reading.

High Growth= 66% to the 99%

Typical Growth= 35% to 65%

Low Growth= 1% to 34%



MATH GROWTH FOR 17-18

| Grade Level | Winter Median Student Growth | Spring Median Student Growth | Change |
|---------------------|---------------------------------|---------------------------------|--------|
| 5 | 67 | 69 | +2 |
| 6 | 61 | 62 | +1 |
| 7 | 63 | 55 | -8 |
| 8 | 59 | 66 | +7 |
| All Grades = | 62 | 63 | +1 |

High Growth= 66th to the 99th student growth percentile

Typical Growth= 35th to 65th student growth percentile

Low Growth= 1st to 34th student growth percentile



READING GROWTH IN 17-18

| Grade Level | Winter Median Student Growth | Spring Median Student Growth | Growth Change |
|---------------------|------------------------------------|------------------------------------|---------------|
| 5 | 57 | 61 | +4 |
| 6 | 59 | 55 | +6 |
| 7 | 56 | 60 | +4 |
| 8 | 60 | 58 | -2 |
| All Grades = | 58 | 59 | |

High Growth= 66th to the 99th student growth percentile

Typical Growth= 35th to 65th student growth percentile

Low Growth= 1st to 34th student growth percentile



ACTION STEPS FOR 18-19



- Renaissance assessments, RTI cycles, data meetings and focus areas established through the year (4x this school year)
- ACT (Assisting Children & Teachers) Structure with Math & Reading specialists
- Monthly Data Meetings to determine intervention groups for skill development & enrichment opportunities
- Analysis of Renaissance universal screening tool for Math and Reading (instructional planning reports, progress monitoring, & goal setting)
- Teacher coaching from Math & Reading Specialists



GOAL 3 (DEEPER LEARNING & POG)



District Goal : Excel in academic achievement, and Profile of a Natick Graduate (POG) competencies for all groups and sub groups of students.

Strategic Objective: Use relationship knowledge to engage students and their passions

Building Goal 3: 100% of students will have deeper learning experiences with encounters in project-based learning that are linked to the learning outcomes and incorporate the competencies of our Profile of a graduate (critical thinking & problem-solving, communication, collaboration, & empathy, and resilience.

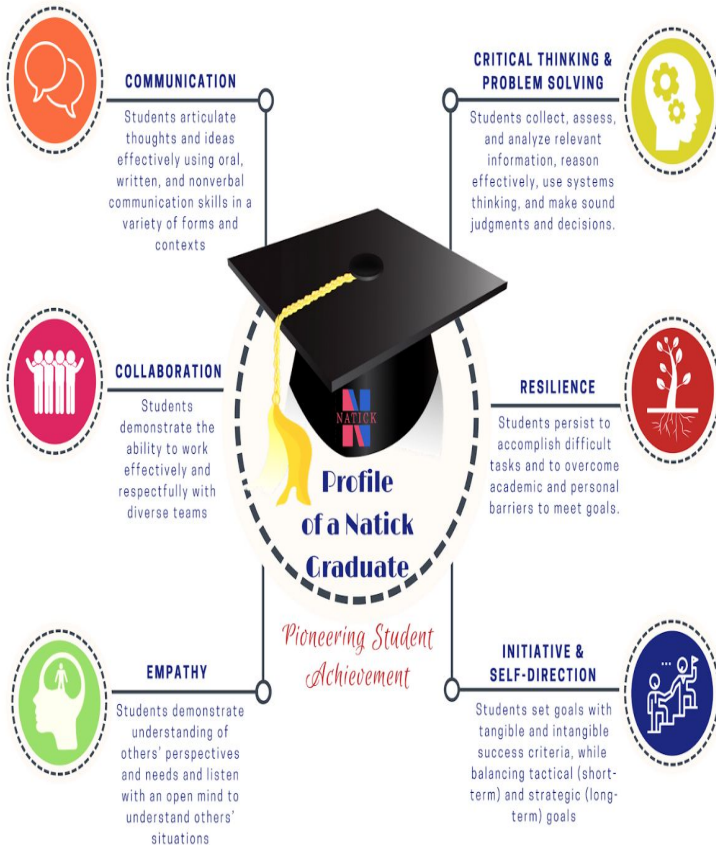


GOAL 2

NEW ACTIONS

STEPS FOR 17-18

- Identify strengths and deficiencies in POG competencies and then create plan to address shortfalls
- Increase deeper learning experiences for students by asking staff to have at least one PBL unit
- Staff workshops on deeper learning & blended learning
- Peer observations on best practices in deeper Learning approaches
- Walk-throughs focused on 4 C's (Collaboration, Communication, Critical Thinking, and Creativity)
- STEM Week (Lunar Colony: Grade 7) & Urban Farming: Grade 8) October 2018





NATICK High School

SCHOOL IMPROVEMENT PLAN - 2018-2019





GOAL #1 - RELATIONSHIPS MATTER

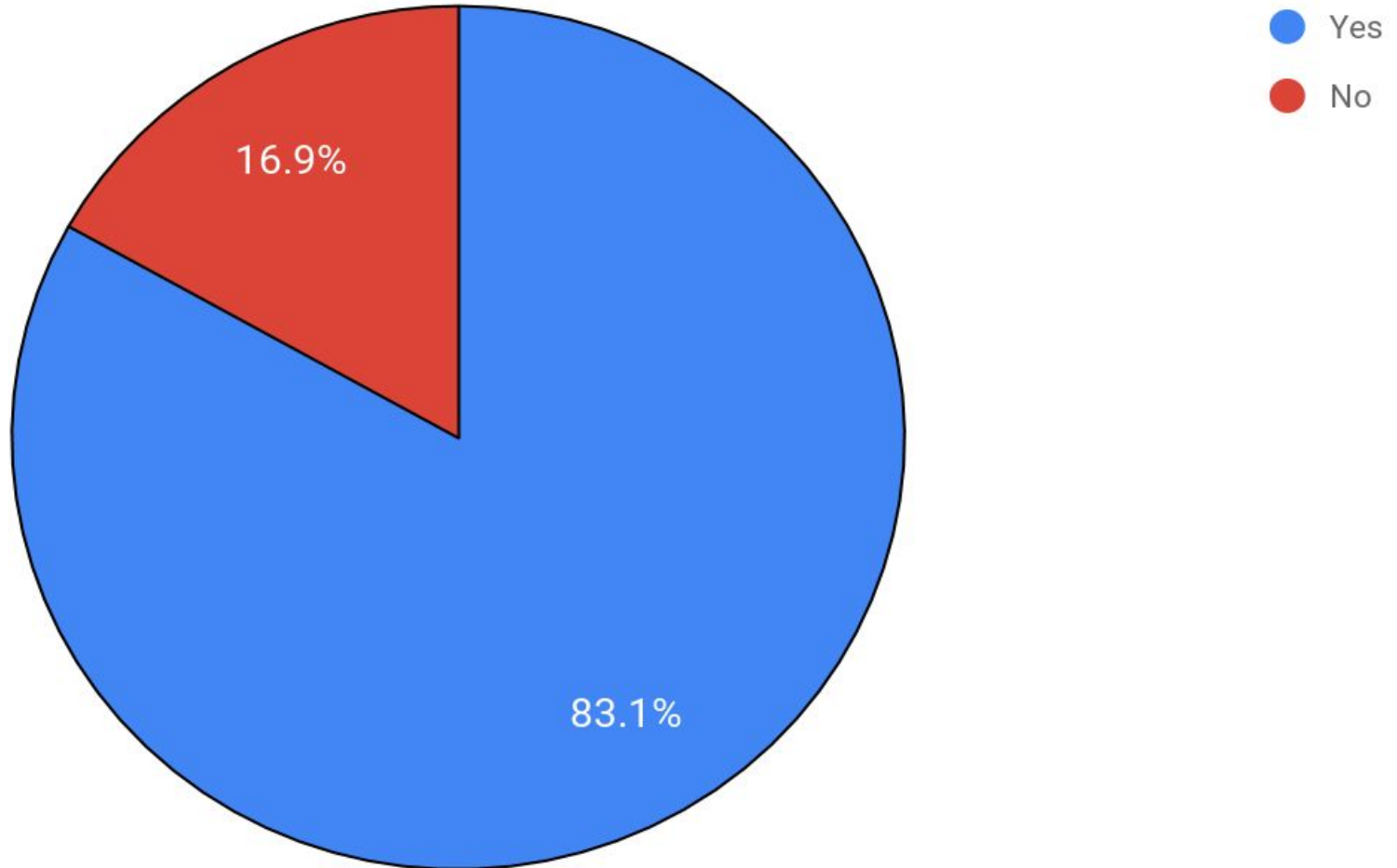
Build relationships with students, students with each other, and staff with each other

- Ensure that every student has a Trusted Adult
- Continue to make NHS a safe space for all our students
- Continue to improve the mental and physical health of our students
- Continue to make NHS a supportive and collaborative school for teachers and staff



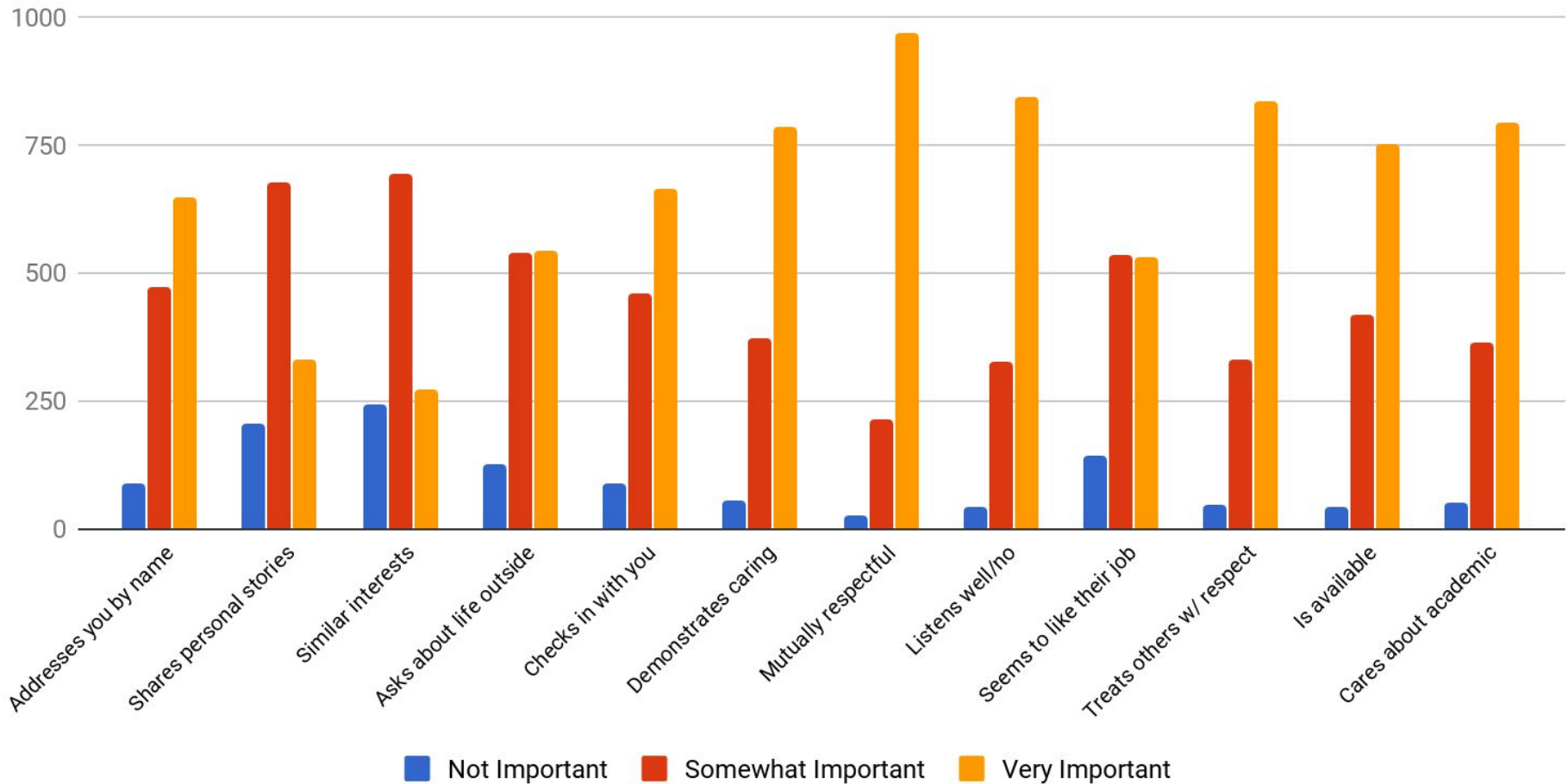
Trusted Adult - Natick High School

Do you have a trusted adult AT SCHOOL?



Trusted Adult (cont.)

To form a trusted relationship with an adult AT SCHOOL, how important are the following (ALL STUDENTS):





GOAL #2: STUDENT ENGAGEMENT

Use relationship knowledge to engage students and their passions

- Ensure that all students achieve the goals articulated in the Profile of a Graduate
- Redefine the Senior year to include project-based learning and capstone experience
- Dramatically improve the attendance of NHS students
- Expand offerings, add staff and use space more efficiently





PROFILE OF AN NHS GRADUATE



Lifelong Learners - Natick High School students think critically, problem-solve creatively, communicate clearly and work collaboratively to master core content and solve problems.



Responsible Decision Makers - Natick High School students practice self-determination, demonstrate resilience, accept responsibility and demonstrate personal integrity to direct their own learning and reach their full potential.



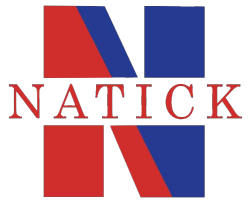
Citizen Leaders - Natick High School students develop social and cross-cultural skills that inspire leadership, encourage teamwork, and promote communication.



REDEFINING THE SENIOR YEAR

- Engage Natick High School community in thoughtful and creative exploration
- Redefine elements of the Senior year to align to POG
- Revise the Senior Internship Program
- Consider pathways and project-based capstone requirements
- Design and offer new electives for Seniors





GOAL #3: STUDENT LEARNING

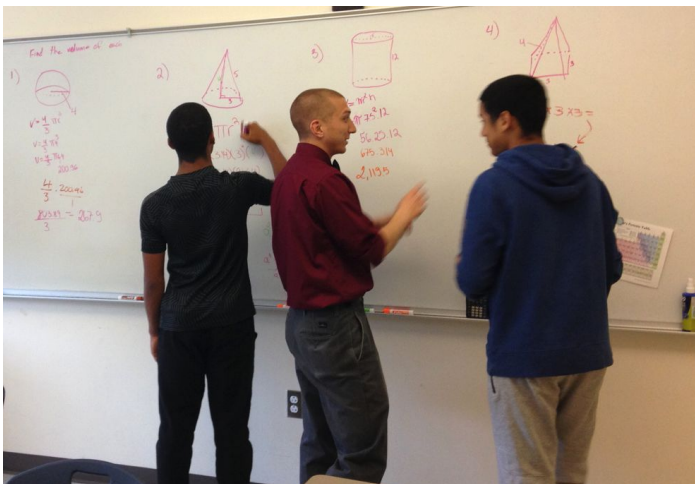
Use assessment data to follow learners & make instructional decisions

- Continue to support academic achievement of all students
- Align written curriculum to the Profile of a NHS graduate
- Initiate discussions around grades, assessments and levels





Co-Teaching and RTI Workshops



NATICK QUESTIONS (?)

