

**NATICK PUBLIC SCHOOLS**  
**School Committee Meeting**  
**January 22, 2024**  
**6:00 PM**  
**School Committee Room - 3rd flr, Town Hall**

**Posted Date: Thursday, January 18, 2024 at 3:40 PM**

**Open Meeting 6:00PM, Executive Session 6:05PM, Return to Open Session approximately at 6:30PM. Virtual Meeting Accessed Via: [https://us06web.zoom.us/j/2038566119?](https://us06web.zoom.us/j/2038566119?pwd=TmtsdxgXenQ0YXRlN1FicHVpd3hEZZ09)**  
**pwd=TmtsdxgXenQ0YXRlN1FicHVpd3hEZZ09 Meeting ID: 203 856 6119 Passcode: 987179 One tap mobile +13126266799,,2038566119# US (Chicago) +16465588656,,2038566119# US (New York) Dial by your location +1 312 626 6799 US (Chicago) +1 646 558 8656 US (New York) Meeting ID: 203 856 6119 Find your local number: <https://us06web.zoom.us/j/keAEm9sL> . If any member of the public, attending the meeting virtually, wishes to take advantage of public speak, they should email the School Committee Chair, Shai Fuxman at ([sfuxman@natickps.org](mailto:sfuxman@natickps.org)), one hour prior to the start of the meeting. Your email should include your name, town and your request to be called upon during the public speak portion of the agenda. The School Committee Chair will then announce your name and you will be unmuted and prompted to turn on your video for your opportunity to share your remarks. Per our public speak policy, each speaker will have up to 3 minutes.**

**Posted In Accordance with Provisions of M.G.L. Chapter 30A, Sections 18-25**

<b>OPEN SESSION</b>
---------------------

- Roll Call
- Pledge of Allegiance
- Moment of Silence
- Announcements

<b>EXECUTIVE SESSION - this portion of the meeting is not open to the public</b>
--

1. To Conduct Strategy Sessions in Preparation for Negotiations with Non-Represented Personnel (Permanent Superintendent and Campus Aides)
2. To discuss strategy with respect to litigation if an open meeting may have a detrimental effect on the litigation position of the public body and the chair so declares.

**PUBLIC SPEAK**

Public Speak is scheduled for a period of fifteen minutes. Each speaker will be permitted a maximum of three minutes during which time they can speak about topics within the scope of responsibility of the School Committee. All remarks will be addressed through the School Committee Chair. Public Speak is not a time for debate or response to comments by the School Committee.

- Teacher Representative
- Student Representative

## **CONSENT AGENDA**

1. Approve Overnight Baseball Field Trip to Cooperstown, NY - High School

## **CHAIRMAN'S REPORT**

1. Discussion of the 2024-2025 School Calendar
2. Update on the Permanent Superintendent Search
3. Town Administrator's Report (James Errickson) - Financial Overview

## **SUPERINTENDENT'S REPORT**

1. Transportation Bid
2. Connolly Bus Bid
3. FY24 Second Quarter Update and Financial Report
4. FY25 Budget: Preliminary Report
5. FY25 Technology Department Budget Request

## **ACTION ITEMS**

1. Approve the 2024-2025 School Calendar
2. Approve Update to Non-Representative Salary Schedule
3. Approve Transportation Contract 2024-2027 with Options to Extend
4. Approve Update on the Permanent Superintendent Search

*Agenda items will be addressed in an order determined by the chair. Times are approximate.*

---

**ITEM TITLE:** To Conduct Strategy Sessions in Preparation for Negotiations with Non-Represented Personnel (Permanent Superintendent and Campus Aides)

**DATE:**

**ITEM TYPE:**

**ITEM SUMMARY:**

**BACKGROUND**

**INFORMATION:**

**RECOMMENDATION:**

---

---

**ITEM TITLE:** To discuss strategy with respect to litigation if an open meeting may have a detrimental effect on the litigation position of the public body and the chair so declares.

**DATE:**

**ITEM TYPE:**

**ITEM SUMMARY:**

**BACKGROUND  
INFORMATION:**

**RECOMMENDATION:**

---



---

**ITEM TITLE:** Approve Overnight Baseball Field Trip to Cooperstown, NY - High School

**DATE:**

**ITEM TYPE:**

**ITEM SUMMARY:**

**BACKGROUND INFORMATION:**

**RECOMMENDATION:**

---

**ATTACHMENTS:**

<b>Description</b>	<b>File Name</b>	<b>Type</b>
Overnight Baseball Field Trip to Cooperstown, NY - High School	baseball_field_trip_high_school_for_1.22_mtg.pdf	Cover Memo

# School Sponsored Field Trip Request Form Out of State Travel ONLY

Attach itinerary, student lists (if known), hotel information, chaperone sign-off forms, waiver requests, etc. to the completed request form and send to the Principal's office. If you will just be submitting the one request form, you may return it by email.

Submit to the principal's office no later than the Wednesday before the Natick High School Committee is to meet. Overseas trip requests must be submitted and also approved in advance of any marketing to the students.

The lead teacher or an adult representative from your trip must appear at the School Committee meeting to present the request. You will be notified of the date of this meeting.

To: Dr. Bella Wong, Interim Superintendent

From Josepha Blocker, NHS Principal

Date: 1/4/24

Re: Cooperstown Trip - NHS Baseball

I would like to request School Committee Approval for the following over night / out-of state trip:

Lead teacher's name: Jason Hoxe

Group: NHS Baseball - Varsity only

Destination and also Itinerary: Cooperstown, NY - Itinerary + Info attached

Date of trip: Sunday, April 14th - Monday, April 15th 2024

Transportation: Coach Bus

Mode of transportation requested: -

Method of payment (fundraising, etc.): From program funds

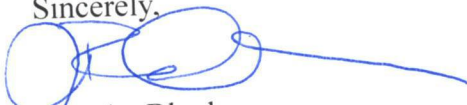
Names of chaperones: Jason Hoxe, Billy Gassett, Matt Lodi, Nick Robert.

Estimated Cost of trip per student: \$0

Please state the purpose of the this trip: Educational Purpose of Baseball History at the National Baseball HOF and historical Doubleday Field.

I support this request and thank you for your consideration.

Sincerely,



Josepha Blocker  
Principal

☐ I have attached all relevant forms necessary to submit this request.

Revised June, 2023

# Cooperstown 2024 - Request for overnight trip



**NATICK REDHAWKS**



**FRANKLIN PANTHERS**

# Purpose and Objective

- To give student athletes an educational experience through a non traditional athletic setting
- Demonstrate and promote independence, responsibility, and respect while representing each school district
- The National Baseball Hall of Fame and Museum offers trips for students grades 3-12 that offer content rich experiences delivered in a structured setting.
- Student athletes will experience a one of a kind participatory (non MIAA competition) game at the historic Doubleday Field, widely considered “the birthplace of baseball.”

## NHS and FHS Coaching Staff

- NHS staff has experience running this trip in the past (2010, 2012, 2018, 2022)
- Both programs share similar goals, values, and high expectations for their student athletes
- Head coaches have a 20+ year baseball and personal history

# Rough Itinerary

## Sunday, April 14th 2024

- 7:30 am - Both teams meet and board charter bus at Mahan field parking lot
- 8:00 am - Bus departs Mahan field
- 12:00 pm - 2:00 pm Arrive in Cooperstown, NY - Lunch and souvenirs shopping
- 2:15pm - Tour National Baseball Hall of Fame and Museum
- 4:00 pm - Check in at hotel (BW Cooperstown)
- 5:30 pm - Team Dinners (Both NHS & FHS)
- 7:00pm - Bowling at Clark Sports Center or Curse of the Bambino Escape Room
- 9:00 pm - Return to hotel
- 10:00 pm - Lights out and room checks

## Monday, April 15th 2024

- 7:00 am - 8:30 am - Breakfast at hotel
- 8:45 am - Depart for Doubleday Field
- 9:00 am - Arrive and pregame
- 10:00 am - 7 Inning joint intersquad practice with umpires (non MIAA)
- 12:00 pm - 1:30 pm - Lunch and last minute shopping
- 1:45 - 2:00 pm - Board bus
- 2:00 pm - Depart Cooperstown, NY
- 6:00 pm - Arrive at Mahan field parking lot

# Anticipated Costs and Responsibility

NHS and FHS Baseball Programs will split the following costs:

- \$3300 - Charter Bus
- \$1200-\$1400 Hotel rooms (appx \$100 per room X 12-14 rooms)
- \$500-\$600 Admission to HOF
- \$600-\$800 Teams dinner
- \$500 - Rental of Doubleday Field
- \$150 - Umpires

Total rough cost \$5,950 - \$6,450

**Cost per team \$2,975 - \$3,225**

Players and Coaches are independently responsible for the following costs:

- Monday, April 18th - Lunch
- Monday, April 18th - Souvenirs shopping
- Tuesday, April 19th - Lunch and last minute shopping

# Miscellaneous Information

- Date could change based on field availability, but only forward or back a day
- Times could fluctuate slightly based on travel/length of game etc.
- Both teams will hold parent/player meetings at their respective schools closer to the date to review all information in detail, as well as team expectations

---

**ITEM TITLE:** Discussion of the 2024-2025 School Calendar  
**DATE:**  
**ITEM TYPE:**  
**ITEM SUMMARY:**  
**BACKGROUND INFORMATION:**  
**RECOMMENDATION:**

---

**ATTACHMENTS:**

<b>Description</b>	<b>File Name</b>	<b>Type</b>
Option 2	option_2_2024_2025_school_calendar_option_2_revised_(1).pdf	Cover Memo
Option 3	option_3_24_25_School_Calendar_-_Option_3_(1).pdf	Cover Memo



# Natick Public Schools

## 2024-2025 School Calendar

August 2024						
Su	M	Tu	W	Th	F	Sa
				1	2	3
4	5	6	7	8	9	10
11	12	13	14	15	16	17
18	19	20	21	22	23	24
25	26	27	28	29	30	31

(3 days)

November 2024						
Su	M	Tu	W	Th	F	Sa
					1	2
3	4	5	6	7	8	9
10	11	12	13	14	15	16
17	18	19	20	21	22	23
24	25	26	27	28	29	30

(16 days)

February 2025						
Su	M	Tu	W	Th	F	Sa
						1
2	3	4	5	6	7	8
9	10	11	12	13	14	15
16	17	18	19	20	21	22
23	24	25	26	27	28	

(15 days)

May 2025						
Su	M	Tu	W	Th	F	Sa
				1	2	3
4	5	6	7	8	9	10
11	12	13	14	15	16	17
18	19	20	21	22	23	24
25	26	27	28	29	30	31

(21 days)

September 2024						
Su	M	Tu	W	Th	F	Sa
1	2	3	4	5	6	7
8	9	10	11	12	13	14
15	16	17	18	19	20	21
22	23	24	25	26	27	28
29	30					

(20 days)

December 2024						
Su	M	Tu	W	Th	F	Sa
1	2	3	4	5	6	7
8	9	10	11	12	13	14
15	16	17	18	19	20	21
22	23	24	25	26	27	28
29	30	31				

(15 days)

March 2025						
Su	M	Tu	W	Th	F	Sa
						1
2	3	4	5	6	7	8
9	10	11	12	13	14	15
16	17	18	19	20	21	22
23	24	25	26	27	28	29
30	31					

(20 days)

June 2025						
Su	M	Tu	W	Th	F	Sa
1	2	3	4	5	6	7
8	9	10	11	12	13	14
15	16	17	18	19	20	21
22	23	24	25	26	27	28
29	30					

(13 days)

October 2024						
Su	M	Tu	W	Th	F	Sa
		1	2	3	4	5
6	7	8	9	10	11	12
13	14	15	16	17	18	19
20	21	22	23	24	25	26
27	28	29	30	31		

(21 days)

January 2025						
Su	M	Tu	W	Th	F	Sa
			1	2	3	4
5	6	7	8	9	10	11
12	13	14	15	16	17	18
19	20	21	22	23	24	25
26	27	28	29	30	31	

(21 days)

April 2025						
Su	M	Tu	W	Th	F	Sa
		1	2	3	4	5
6	7	8	9	10	11	12
13	14	15	16	17	18	19
20	21	22	23	24	25	26
27	28	29				

(15 days)

NOTE: For option 2 please refer to December, April and June dates. December 23, December 24 and April 18 would be closed making June 18 or 26 the last day of school depending on snow days.

- Schools Closed
- Early Release Day for ALL STUDENTS
- Early Release Day for PreK, Elementary and Middle Schools Only
- Early Release Day for PreK and Elementary Only

- Aug 26-27 Faculty Return and Meetings (all buildings are closed to public)
- Aug 28 First Day of School for students
- Sep 2 Labor Day - Closed
- Sep 18 Early Release Day
- Oct 3-4 Rosh Hashana - Closed Oct 3 (observed on Oct 4)
- Oct 12 Yom Kippur - Observed
- Oct 14 Columbus Day/Indigenous People's Day - Closed
- Oct 23 Early Release Day
- Nov 1 Diwali - Closed
- Nov 5 NILS/Election Day - Closed
- Nov 6 Early Release Day - PreK and Elementary ONLY
- Nov 11 Veteran's Day - Closed
- Nov 20 Early Release Day - PreK, Elementary & Middle Schools ONLY
- Nov 27 Early Release Day
- Nov 28-29 Thanksgiving - Closed
- Dec 11 Early Release Day
- Dec 23-31 Winter Break
- Jan 1 New Year's Day - Closed

- School Closed for Kindergarten only
- First and Last Day of School
- Religious & Cultural Observance

NOTE: Jewish and Muslim holidays begin at sundown the day before.

- Jan 15 Early Release Day
- Jan 20 Martin Luther King Day - Closed
- Jan 29 Lunar New Year - Observed
- Feb 5 Early Release Day
- Feb 17-21 February Vacation - Closed
- March 12 Early Release Day
- March 31 Eid al-fitr - Closed
- Apr 2 Early Release Day - PreK and Elementary ONLY
- Apr 9 Early Release Day
- Apr 18 Good Friday/Orthodox Good Friday - Closed
- Apr 20 Easter/Orthodox Easter - Observed
- Apr 21-25 April Vacation - Closed
- May 2 School Closed for Kindergarten ONLY
- May 14 Early Release Day
- May 26 Memorial Day - Closed
- June 7 Eid al-Adha - Observed
- June 18 Early Release - Last Day of School (no snow days)
- June 19 Juneteenth Day - Closed
- June 26 Early Release - Last Day of School (5 snow days)



# Natick Public Schools

## 2024-2025 School Calendar

August 2024						
Su	M	Tu	W	Th	F	Sa
				1	2	3
4	5	6	7	8	9	10
11	12	13	14	15	16	17
18	19	20	21	22	23	24
25	26	27	28	29	30	31

(3 days)

November 2024						
Su	M	Tu	W	Th	F	Sa
					1	2
3	4	5	6	7	8	9
10	11	12	13	14	15	16
17	18	19	20	21	22	23
24	25	26	27	28	29	30

(16 days)

February 2025						
Su	M	Tu	W	Th	F	Sa
						1
2	3	4	5	6	7	8
9	10	11	12	13	14	15
16	17	18	19	20	21	22
23	24	25	26	27	28	

(15 days)

May 2025						
Su	M	Tu	W	Th	F	Sa
				1	2	3
4	5	6	7	8	9	10
11	12	13	14	15	16	17
18	19	20	21	22	23	24
25	26	27	28	29	30	31

(21 days)

September 2024						
Su	M	Tu	W	Th	F	Sa
1	2	3	4	5	6	7
8	9	10	11	12	13	14
15	16	17	18	19	20	21
22	23	24	25	26	27	28
29	30					

(20 days)

December 2024						
Su	M	Tu	W	Th	F	Sa
1	2	3	4	5	6	7
8	9	10	11	12	13	14
15	16	17	18	19	20	21
22	23	24	25	26	27	28
29	30	31				

(15 days)

March 2025						
Su	M	Tu	W	Th	F	Sa
						1
2	3	4	5	6	7	8
9	10	11	12	13	14	15
16	17	18	19	20	21	22
23	24	25	26	27	28	29
30	31					

(20 days)

June 2025						
Su	M	Tu	W	Th	F	Sa
1	2	3	4	5	6	7
8	9	10	11	12	13	14
15	16	17	18	19	20	21
22	23	24	25	26	27	28
29	30					

(12 days)

October 2024						
Su	M	Tu	W	Th	F	Sa
		1	2	3	4	5
6	7	8	9	10	11	12
13	14	15	16	17	18	19
20	21	22	23	24	25	26
27	28	29	30	31		

(21 days)





January 2025						
Su	M	Tu	W	Th	F	Sa
			1	2	3	4
5	6	7	8	9	10	11
12	13	14	15	16	17	18
19	20	21	22	23	24	25
26	27	28	29	30	31	

(21 days)




April 2025						
Su	M	Tu	W	Th	F	Sa
		1	2	3	4	5
6	7	8	9	10	11	12
13	14	15	16	17	18	19
20	21	22	23	24	25	26
27	28	29				

(16 days)

NOTE: For option 3 please refer to December, April and June dates. December 23 & December 24 school would be closed and April 18 would be an early release day making June 17 or 25 the last day of school depending on snow days.

	Schools Closed
	Early Release Day for ALL STUDENTS
	Early Release Day for PreK, Elementary and Middle Schools Only
	Early Release Day for PreK and Elementary Only

Aug 26-27	Faculty Return and Meetings (all buildings are closed to public)
Aug 28	First Day of School for students
Sep 2	Labor Day - Closed
Sep 18	Early Release Day
Oct 3-4	Rosh Hashana - Closed Oct 3
Oct 12	Yom Kippur - Observed
Oct 14	Columbus Day/Indigenous People's Day - Closed
Oct 23	Early Release Day
Nov 1	Diwali - Closed
Nov 5	NILS /Election Day - Closed
Nov 11	Veteran's Day - Closed
Nov 13	Early Release Day - PreK and Elementary ONLY
Nov 20	Early Release Day - PreK, Elementary & Middle Schools ONLY
Nov 27	Early Release Day
Nov 28-29	Thanksgiving - Closed
Dec 11	Early Release Day
Dec 23 - 31	Winter Break
Jan 1	New Year's Day - Closed

	School Closed for Kindergarten only
	First and Last Day of School
	Religious & Cultural Observance

NOTE: Jewish and Muslim holidays begin at sundown the day before.

Jan 15	Early Release Day
Jan 20	Martin Luther King Day - Closed
Jan 29	Lunar New Year - Observed
Feb 5	Early Release Day
Feb 17-21	February Vacation - Closed
March 12	Early Release Day
March 31	Eid al-fitr - Closed
Apr 2	Early Release Day - PreK and Elementary ONLY
Apr 9	Early Release Day
Apr 18	Good Friday/Orthodox Good Friday - Early Release Day
Apr 20	Easter/Orthodox Easter - Observed
Apr 21-25	April Vacation - Closed
May 2	School Closed for Kindergarten ONLY
May 14	Early Release Day
May 26	Memorial Day - Closed
June 7	Eid al-Adha - Observed
June 17	Early Release - Last Day of School (no snow days)
June 19	Juneteenth Day - Closed
June 25	Early Release - Last Day of School (5 snow days)

---

**ITEM TITLE:** Update on the Permanent Superintendent Search  
**DATE:**  
**ITEM TYPE:**  
**ITEM SUMMARY:**  
**BACKGROUND INFORMATION:**  
**RECOMMENDATION:**

---

---

<b>ITEM TITLE:</b>	Town Administrator's Report (James Errickson) - Financial Overview
<b>DATE:</b>	
<b>ITEM TYPE:</b>	
<b>ITEM SUMMARY:</b>	
<b>BACKGROUND INFORMATION:</b>	
<b>RECOMMENDATION:</b>	

---

---

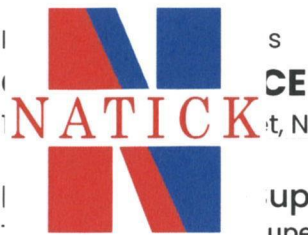
**ITEM TITLE:** Transportation Bid  
**DATE:**  
**ITEM TYPE:**  
**ITEM SUMMARY:**  
**BACKGROUND INFORMATION:**  
**RECOMMENDATION:**

---

**ATTACHMENTS:**

<b>Description</b>	<b>File Name</b>	<b>Type</b>
FY25 - FY27 Transportation Bid	revised_fy25- fy27_transportation_bid.pdf	Cover Memo





S  
CE

Natick, MA 01760

Superintendent  
Superintendent

Matthew J. Gillis, Assistant Superintendent for Finance

Susan Balboni, Assistant Superintendent for Teaching, Learning, and Innovation

To: Dr. Bella Wong, Interim Superintendent  
Natick School Committee

From: Matthew Gillis, Assistant Superintendent of Finance

Date: January 18, 2024

Re: FY25-27 Transportation Bid Results & Recommended Contract Awards

On January 16, 2024, at 12:00 PM, Robin Agostinelli-Solivan, Transportation Coordinator, and Bryan LeBlanc, Town Procurement Officer (via phone), and I opened the bids submitted to the district for the following contracts: Regular School Bus Transportation, METCO Bus Transportation, Athletic/Field Trip Buses, In-Town Special Education Van service, METCO Elementary Van service, & METCO Buses. The contract is structured in accord with MGL procurement laws and thus is a three-year initial contract with two individual option years the NPS has the sole option to exercise, for a total maximum term of five years. We 30 days from the bid opening, to award the contract.

The following changes to contract terms were intended to curtail price increases, generate some more competition, and add some value while encouraging providing safe and timely service.

- 1.) Contract term moved from 3 years to (a probable) 5 years
- 2.) Bid forms adjusted to encourage more competition.
- 3.) Location of garage no longer restricted to zip code 01760, must be able to meet 1 hour requirement when called for emergency service
- 4.) Fuel adjustment clause revised from \$2.92 per gallon for all fuels in 2021, to \$4.24 for diesel and \$3.20 for regular unleaded
- 5.) Real time GPS access to be provided to NPS Central Office
- 6.) Video cameras to be added to all buses that did not already have them
- 7.) Dry run of routes required before school begins
- 8.) Penalties for late service for conditions within the contractor's control
- 9.) Required Prices for Performance Bond to get direct cost option for NPS:
  - a. JFK services \$10,555, 1.5% the value of Year 1
  - b. Connolly bus \$20,059, 0.9% the value of Year 1
  - c. Please read performance bond summary before voting on page 3

**Recommended Motion:** Move to approve the Assistant Superintendent sign all transportation bid contracts as voted and approved by the School Committee.

*Natick Public Schools does not discriminate on the basis of race, creed, color, sex, age, gender identity, religion, nationality, sexual orientation, disability, pregnancy and pregnancy-related conditions, physical and intellectual differences, immigration status, or homeless status.*

Here are the bid results.

BUS BID Results	Connolly	Connolly	AA Trans	AA Trans	Connolly	Connolly
Year	Reg Day	Late Run	METCO	Late Run	Athletic and Field Trips	
FY25	\$2,199,600	\$119,700	\$141,300	\$90,020	\$445	\$80
FY26	\$2,316,600	\$126,000	\$146,880	\$93,520	\$460	\$85
FY27	\$2,433,600	\$132,300	\$152,820	\$97,160	\$475	\$90
Contract Total	\$6,949,800	\$378,000	\$441,000	\$280,700	Round Trip*	Hourly*
Low Bid	Yes	Yes	Yes	Yes	Yes	Yes
R&R	Yes	Yes	Yes	Yes	Yes	Yes

### **Recommended Motion Per School Transportation Contract**

- 1.) Move to award a new three-year contract to the low responsive and responsible bidder, Connolly Bus Company, for regular school day bus services per their per diem bid, estimated not to exceed \$7,327,800 for the next three years.
- 2.) Move to award a new three-year contract to the low responsive and responsible bidder, AA Transportation, Inc. for METCO bus services per their per diem bid, estimated not to exceed \$721,700 for the next three years.
- 3.) Move to award a new three-year contract to the low responsive and responsible bidder, Connolly Bus Company, for Athletic and field Trip bus services per their bid not to exceed \$the hourly or annual bid price for the next three years.

Van BID Results	JFK	JFK	AA Trans	MTS	JFK
Year	In-Town	Late Van	METCO	METCO	Vocational Aggie
FY25	\$586,521	\$54,000	\$97,200	\$117,000	\$63,117
FY26	\$592,371	\$57,600	\$100,980	\$117,000	\$64,017
FY27	\$598,291	\$61,200	\$105,120	\$117,000	\$64,917
Contract Total	\$1,777,183	\$172,800	\$303,300	\$351,000	\$192,051
Low Bid	Yes	Yes	Yes	No	Yes
R&R	Yes	Yes	Yes	Yes	Yes



- 4.) Move to award a new three-year contract to the low responsive and responsible bidder, JFK Transportation Services, for in-town van services per their per diem bid, estimated not to exceed \$1,949,984, for the next three years.
- 5.) Move to award a new three-year contract to the low responsive and responsible bidder, AA Transportation Services, for METCO elementary van service per their per diem bid, estimated not to exceed \$303,300 for the next three years.
- 6.) Move to award a new three-year contract to the low responsive and responsible bidder, JFK Transportation Services, for van service to the vocational agricultural high school per their per diem bid, estimated not to exceed \$192,051 for the next three years.

For reference, here are the price changes and percent changes, per diem from the current contract expiring in August 2024, and the new per diem prices for next year. The signed bid form for regular school bus service from Connolly Bus is also attached for your reference.

Base Bid/Contract	Low Bidder	FY24 Per Diem	FY25 Low Bid Per Diem	% Change
Reg Ed Bus	Connolly Bus Co	\$ 426.00	\$ 470.00	10.3%
Reg Ed Late Bus	Connolly Bus Co	\$ 85.00	\$ 95.00	11.8%
Athletic & Field Trips	Connolly Bus Co	\$ 420.00	\$ 445.00	6.0%
METCO Bus	AA Transport	\$ 727.00	\$ 785.00	8.0%
METCO Late Bus	AA Transport	\$ 590.00	\$ 668.00	13.2%
METCO Elem Van	AA Transport	\$ 465.08	\$ 540.00	16.1%
Special Ed In-Town Vans	JFK Transportation, Inc	\$ 250.65	\$ 250.65	0.0%
SPED Late Van	JFK Transportation, Inc	\$ 75.00	\$ 75.00	0.0%
Voc Aggie Van	JFK Transportation, Inc	\$ 300.00	\$ 350.65	16.9%

Note:

Natick's out-of-district special education transportation services are provided by the ACCEPT Collaborative, of which Natick is a member, and services do not need to be bid under MGL 30b. This service model has proven advantageous to Natick's budget in the recent past and is expected to be below typical market pricing for FY25.

#### **Performance Bond (Additional Risk Management)**

Performance bonds are a form of insurance to protect the buyer in case the contractor cannot perform the work to honor the contract. Companies can and do go out of business or fail to fulfill some of their contracts. Should that happen, the bonding company helps find another service provider to honor the contract, or policy term, and will pay any premium over the contracted price to protect the insured. This does not guarantee there will be no break in service, but it is a form of protection.

Performance bonds are required for public construction projects, but are optional for other services, like school transportation. NPS did not require a performance bond with the prior transportation contract. I have requested the bond language from the vendors to verify exactly what is covered.

Based on all information available to me, I do recommend NPS purchase the performance bond for Special Education services provided by JFK Transportation, provided a legal review of the policy



approves. We do not have order the performance bond within 30 days of opening but should do so before FY25 begins if we want to proceed.

---

**ITEM TITLE:** Connolly Bus Bid

**DATE:**

**ITEM TYPE:**

**ITEM SUMMARY:**

**BACKGROUND INFORMATION:**

**RECOMMENDATION:**

---

**ATTACHMENTS:**

<b>Description</b>	<b>File Name</b>	<b>Type</b>
Connolly Bus Bid	connolly_bus_bid.pdf	Cover Memo

APPENDIX 1  
NATICK PUBLIC SCHOOLS  
BID FORM – Regular School Bus Service

The undersigned hereby submits a sealed bid for school bus transportation services in the Town of Natick.

Printed Name of Bidder: Michael J Connolly & Sons, Inc.  
Address: 609 Main Street, Walpole MA 02081

The Bidder hereby pledges to deliver the complete scope of services for school bus transportation services in the Town of Natick, as outlined in the IFB:

Natick In-Town School Bus Service – Grades K-12, to & From School				
Base Contract	Per Diem Price	Annual Price 26 buses x 180 Days	Annual Price in Written Words	Price Per Diem, Monitor, Round Trip
FY25	\$470	\$2,199,600	Two million one hundred ninety nine thousand six hundred	\$158
FY26	\$495	\$2,316,600	Two million three hundred sixteen thousand six hundred	\$163
FY27	\$520	\$2,433,600	Two million four hundred thirty three thousand six hundred	\$168
Subtotal Base Contract Price		<b>\$6,949,800</b>	Six million nine hundred forty nine thousand eight hundred	
Option Yr 1	\$550	\$2,574,000	Two million five hundred seventy four thousand	\$173
Option Yr 2	\$585	\$2,737,800	Two million seven hundred thirty seven thousand eight hundred	\$178

Natick In-Town Late Bus Service			
Base Contract	Per Diem Price	Annual Price 7 buses x 180 Days	Annual Price in Written Words
FY25	\$95	\$119,700	One hundred nineteen thousand seven hundred
FY26	\$100	\$126,000	One hundred twenty six thousand
FY27	\$105	\$132,300	One hundred thirty two thousand three hundred
Subtotal Base Contract Price		<b>\$378,000</b>	Three hundred seventy eight thousand
Option Yr 1	\$110	\$138,600	One hundred thirty eight thousand six hundred
Option Yr 2	\$115	\$144,900	One hundred forty four thousand nine hundred

MAIN BID WORK – Three (3) year total term, subject to annual appropriation. The bid totals for the first three years school bus service and late bus service should be handwritten below.

Seven million three hundred twenty seven thousand eight hundred (write out amount in words) dollars and zero cents  
(\$ 7,327,800.00) (numeric amount) each year x 3 (years)=  
\_\_\_\_\_ dollars and \_\_\_\_\_ cents  
(\$ \_\_\_\_\_)

In case of any conflict between the amount written in words and the numeric amount in any of the foregoing categories, the amount written in words shall govern.

The Bidder acknowledges receipt of addenda numbered #1, #2, #3, #4 and #5. Write out each addendum. For example, for three (3) addenda issued, please write, "1, 2, and 3." Do not write "1-3" or "3."

The Bidder understands that, pursuant to M.G.L. c.30B, §5, the Natick Public Schools will award, within thirty (30) days of the opening of sealed Bids, one (1) Contract, if at all, to the lowest responsible and responsive Bidder for school bus transportation services in the Town of Natick, as described in the Main Bid Work in Section 3(A) above, for the three (3)-year term.

Bidder certifies as follows:

- A. Bidder is an established business with a minimum of five (5) years of experience in providing school bus transportation services. Bidder's verifiable experience record shall be acceptable to the Natick Public Schools. (Bidder shall attach to the Bid Form a short statement of the status of the business, the year of incorporation/ commencement, a list of any name changes, and a list of any lawsuits pending against it.)
- B. Bidder holds all applicable State and Federal permits, licenses and approvals. (Bidder shall attach to the Bid Form copies of all applicable State and Federal permits, licenses, and approvals.)
- C. DELETED.
- D. Bidder provides supervision of all workers performing under all Contracts held and pledges to provide such supervision under any Contract.
- E. Bidder holds all applicable documentation and Insurance in accordance with this IFB. (Bidder shall attach to the Bid Form copies of relevant insurance certificates. Nothing in this provision, however, shall eliminate the requirement that the Bidder, if chosen as the Successful Bidder, shall submit to the Natick Public Schools endorsements or riders in compliance with the Contract.)
- F. Bidder shall attach to the Bid Form contact information for all clients over the last five (5) years as well as all current Contracts (contact person, address and telephone number). Bidder shall also provide a list of at least six (6) successfully completed jobs in such time, giving the name and address of these projects.
- G. Bidder has not defaulted on any Contract within the last five (5) years.
- H. Bidder maintains a permanent place of business. (Bidder shall attach to the Bid Form the address of his/her/its business.)
- I. Bidder has adequate personnel and equipment to perform the work expeditiously. (Bidder shall also attach to the Bid Form a statement of experience of its personnel and the proposed staffing plan it shall offer in reference to the work for which Bids are sought. Bidder shall attach to the Bid Form a description of its equipment and shall explain how such equipment satisfies the requirements stated herein.)
- J. Bidder has suitable financial status to meet obligations incident to the work. (Bidder shall attach to the Bid Form a financial statement that shows the Bidder's present financial status. This information will not be considered a public record, pursuant to M.G.L. c.4, §7, cl.26th.)



- K. Bidder is registered with the Secretary of the Commonwealth of Massachusetts to do business in Massachusetts. (Bidder shall attach to the Bid Form a copy of a Letter of Good Standing from the Secretary of the Commonwealth's Office.)
- L. Bidder has not failed to perform satisfactorily on Contracts of a similar nature.
- M. Bidder possesses the skill, ability and integrity necessary for the faithful performance of the work.
- N. Bidder shall pay all minimum prevailing wage rates, as contained in Appendix 9 to this IFB, in any Contract awarded by the Natick Public Schools.

The Bidder understands that the award of any Contract pursuant to this IFB shall be subject to appropriation by Natick Town Meeting.

The Bidder agrees that, if he/she/it is the Successful Bidder, he/she/it will within ten (10) days after presentation thereof by the Awarding Authority, execute a Contract in accordance with the terms of this IFB, in the form of the attached Contract. The undersigned certifies under the penalties of perjury that this Bid is in all respects bona fide, fair and made without collusion or fraud with any other person. As used in this subsection the word "person" shall mean any natural person, joint venture, partnership, corporation or other business or legal entity. The undersigned further certifies under penalty of perjury that the said undersigned is not presently debarred from public contracting in the Commonwealth of Massachusetts under the provisions of section twenty-nine F of chapter twenty-nine, or any other applicable debarment provisions of any other chapter of the General Laws or any rule or regulation promulgated thereunder.

The Bidder agrees that all Bid specifications and Contract specifications are hereto made part of any Contract executed with the Natick Public Schools and are binding on the Successful Bidder.

Authorized Signature

Joseph E Connolly, Jr  
Printed Name

President  
Printed Title

01/10/2024  
Date

If a Corporation:  
Full Legal Name

Michael J Connolly & Sons, Inc.

Officers of Corporation and Addresses

Joseph E Connolly, Jr 4 Sexton Farm Road, Walpole MA 02081

Timothy C Connolly, 4 Sexton Farm Road, Walpole MA 02081

State of Incorporation Massachusetts

Principal Place of Business \_\_\_\_\_

609 Main Street, Walpole MA 02081

Telephone Number 508-668-1530

Qualified in Massachusetts Yes X No \_\_\_\_\_

Principal Place of Business in Massachusetts

67 Rockland Street, Natick MA 01760

Telephone Number 508-653-8262

Full Legal Name of Surety Company

Utica Natiponal / Republic Franklin Insurance Company

Principal Place of Business of Surety Company

180 Genesee Street

New Hartford, NY 13413

Telephone Number 800-274-1914

Admitted in Massachusetts Yes X No \_\_\_\_\_

Place of Business in Massachusetts

Eastern Insurance

230 West Central Street

Natick, MA 01760

Telephone Number 508-620-3466

---

**ITEM TITLE:** FY24 Second Quarter Update and Financial Report  
**DATE:**  
**ITEM TYPE:**  
**ITEM SUMMARY:**  
**BACKGROUND INFORMATION:**  
**RECOMMENDATION:**

---

**ATTACHMENTS:**

<b>Description</b>	<b>File Name</b>	<b>Type</b>
FY24 Second Quarter Update and Financial Report	FY24_2nd_Qtr_financial_report_(1).pdf	Cover Memo



Natick Public Schools

**CENTRAL OFFICE**

13 East Central Street, Natick, MA 01760

**Dr. Bella Wong, Superintendent**

Timothy Luff, Deputy Superintendent

Matthew J. Gillis, Assistant Superintendent for Finance

Susan Balboni, Assistant Superintendent for Teaching, Learning, and Innovation

To: Dr. Bella Wong, Interim Superintendent  
Natick School Committee  
From: Matthew Gillis, Assistant Superintendent of Finance  
Date: January 12, 2024  
Re: FY24 2nd Quarter Update + Financial Report

The following pages show the position of the Natick Public Schools as we have passed mid-way through the fiscal year, and about 42% through the school year.

**General Fund**

After posting the transfers and reviewing the line items in late December to project where spending is likely to culminate on June 30, 2024. The good news is we appear to be on target to live with in the overall \$83.27 M budget, with an estimated \$300,000 available provided we do not run into any unplanned expenditures. There is still nearly six months to go and there some expenditures we may have to make that we cannot fully control, such as: new contractual obligations to meet student needs, additional tuitions, heat, substitutes, and some equipment repairs or replacement.

The 2-page General fund report from MUNIS sums up about 750 total line items into the DESE functions so you are not looking at 35-page report. This report brings you to the same bottom-line balance by DESE Function and total for the general fund.

In summary, the revised budget has a few DESE functions with projected shortfalls: substitutes, transportation, attendance, and tuitions. Those will be covered largely a small surplus from various salary, some savings in heat and electricity, and tangible supply accounts. The transportation earmarks will also help with the reductions of transportation expenses reclassified to earmark.

---

*Natick Public Schools does not discriminate on the basis of race, creed, color, sex, age, gender identity, religion, nationality, sexual orientation, disability, pregnancy and pregnancy-related conditions, physical and intellectual differences, immigration status, or homeless status.*

---



## **Revolving Funds**

The two-page summary of our revolving funds and private grants that do not close out with the fiscal year, provides us with some useful information at the snapshot taken on January 5, 2024

1. We continue to charge expenditures to many of user fee based revolving funds and are appreciative of the private grants we have received.
2. We started the year on July with about \$8.84 million in total fund balance and the Year-To-Date (YTD) ending balance of \$578,597 is below the actual cash the town has in its bank accounts.
3. Program coordinators are collecting user fees and filing for reimbursements in a timely manner. Revenue postings to the general ledger are lagging deposits and bank wires.
4. Revenue postings are moving in positive direction and have increased from \$17,142 in the November report to \$511,510, but there is a roughly estimated \$4-5 million in revenue that has not posted and some reimbursements that lag monthly expenses like Food Services and Medicaid.

The end of the report has GL summary reports for Circuit Breaker and the Aftercare Program for your reference. The dates are on the bottom of the GL reports, so any entries that occurred after that time can change the fund balance.

## **Grants**

I hope you find this report summary functional for understanding the big picture of the federal and state grants. Some of the grants and earmarks have taken more time to set up, and January is expected to be a busy month charging expenditures to the grants that we started expenditures on after we received award notifications. There are notes at the bottom of the grant report that reflect some of the changes in transit.

The 3rd quarter report is expected to be with the April 22 meeting packet.

# TOWN OF NATICK

## YTD REPORT - FY24 GF

FOR 2024 13

ACCOUNTS FOR: 0001 GENERAL FUND	ORIGINAL APPROP	TRANFRS/ ADJSTMTS	REVISED BUDGET	YTD EXPENDED	ENC/REQ	AVAILABLE BUDGET	PCT USED
1110 SCHOOL COMMITTEE	36,070	0	36,070	11,800.00	.00	24,270.00	32.7%
1210 SUPERINTENDENT OFFICE	448,781	-121,295	327,486	114,067.61	391.47	213,027.14	35.0%
1220 ASST SUPERINTENDENT	351,969	95,405	447,374	230,029.74	722.87	216,621.39	51.6%
1230 PUPIL PERSONNEL SERVICES ADMIN	877,118	236,922	1,114,040	483,766.01	1,005.00	629,269.06	43.5%
1410 BUSINESS & FINANCE	780,331	121,462	901,793	427,363.48	11,253.84	463,175.25	48.6%
1420 HUMAN RESOURCES	432,244	20,976	453,220	229,477.55	39.34	223,702.91	50.6%
1430 LEGAL FOR SCHOOL COMMITTEE	142,000	12,883	154,883	39,064.69	58,893.30	56,925.00	63.2%
1450 INFORMATION TECHNOLOGY	1,818,153	-157,524	1,660,629	914,606.42	17,915.41	728,107.32	56.2%
2110 CURRICULUM	409,453	92,440	501,893	220,654.57	.00	281,238.41	44.0%
2210 PRINCIPAL OFFICE	4,548,910	-13,934	4,534,976	2,080,045.95	2,083.18	2,452,846.65	45.9%
2220 SCHOOL CURRICULUM LEADERS	405,014	19,350	424,364	162,080.66	.00	262,283.25	38.2%
2305 TEACHERS	39,692,151	1,692,393	41,384,544	15,867,091.37	7,760.88	25,509,692.22	38.4%
2310 TEACHERS SPECIALIST	2,432,968	139,950	2,572,918	961,712.55	.00	1,611,205.82	37.4%
2315 INSTRUCTIONAL COORDINATORS	299,770	175,735	475,505	189,573.20	.00	285,931.69	39.9%
2320 MEDICAL/THERAPEUTIC SVS	3,055,662	287,132	3,342,794	1,344,309.01	23,805.96	1,974,678.66	40.9%
2325 SUBSTITUTES	858,798	-154,000	704,798	462,981.53	.00	241,816.45	65.7%
2330 PARAPROFESSIONALS/AIDES	2,817,247	294,371	3,111,618	1,392,680.22	.00	1,718,938.05	44.8%
2340 LIBRARY MEDIA CENTER	937,832	93,515	1,031,347	386,318.19	.00	645,028.54	37.5%
2351 PROFESSIONAL DEV LEADERSHIP	150,761	9,300	160,061	103,432.04	13,341.14	43,287.36	73.0%
2357 PROFESSIONAL DEV STIPENDS	586,300	1,944	588,244	220,527.60	71,375.12	296,341.00	49.6%
2410 TEXTBOOKS	286,641	6,997	293,638	137,497.37	20,200.39	135,939.89	53.7%
2415 OTHER INST MATERIALS	1,420,505	18,922	1,439,427	1,122,618.21	98,796.31	218,012.62	84.9%
2420 INSTRUCTIONAL EQUIPMENT	72,400	16,868	89,268	38,365.58	11,322.01	39,580.41	55.7%
2430 GENERAL SUPPLIES	323,907	3,928	327,835	213,616.90	32,244.71	81,973.69	75.0%
2440 OTH INSTRUCTIONAL SVS	76,332	854	77,186	19,671.20	5,503.00	52,012.26	32.6%
2451 CLASSROOM INST TECHNOLOGY	4,100	0	4,100	507.61	156.29	3,436.10	16.2%
2710 GUIDANCE/SOCIAL WORK	2,826,596	173,153	2,999,749	1,180,120.29	945.62	1,818,683.21	39.4%
2720 TESTING & ASSESSMENT	201,100	-40,000	161,100	144,328.89	78.01	16,693.10	89.6%
2800 PSYCHOLOGICAL SERVICES	1,205,866	87,874	1,293,740	481,631.75	.00	812,108.00	37.2%
3100 ATTENDANCE	17,000	-12,605	4,395	11,480.80	4,197.00	-11,282.80	356.7%
3200 MEDICAL/HEALTH SERVICES	1,280,591	37,660	1,318,251	532,675.01	115,681.71	669,894.52	49.2%
3300 TRANSPORTATION	3,280,817	770,641	4,051,458	1,619,917.99	2,859,160.20	-427,620.23	110.6%
3510 ATHLETIC DEPARTMENT	843,839	200,717	1,044,556	421,898.80	34,745.94	587,911.46	43.7%
3520 OTHER STUDENT ACTIVITIES	235,741	27,498	263,239	67,340.77	600.00	195,298.34	25.8%
4110 CUSTODIAL SERVICES	250,000	1,286	251,286	134,273.39	17,930.73	99,081.38	60.6%
4120 MAINTENANCE SERVICES	554,850	-119,252	435,598	44,762.77	163,646.15	227,188.98	47.8%
4130 EQUIPMENT REPAIR/REPLACE	1,726,984	-386,442	1,340,542	479,106.29	702,197.65	159,238.25	88.1%
4220 MAINTENANCE OF BUILDINGS	493,900	4,770	498,670	234,922.40	95,613.44	168,134.45	66.3%
4225 BUILDING SECURITY SYSTEM	75,000	21,218	96,218	45,603.24	29,042.16	21,572.84	77.6%
4230 MAINTENANCE OF EQUIPMENT	8,000	0	8,000	1,224.50	.00	6,775.50	15.3%
4400 NETWORKING & TELECOMMUNICATION	991,147	-21,815	969,331	677,622.35	19,251.40	272,457.73	71.9%
5100 EMPLOYEE RETIREMENT	3,332	0	3,332	.00	.00	3,332.26	.0%
5150 EE SEPARATION COSTS	1,300	5,000	6,300	.00	.00	6,300.00	.0%
6200 COMMUNITY SERVICES	28,818	0	28,818	13,623.21	.00	15,195.05	47.3%

# TOWN OF NATICK

## YTD REPORT - FY24 GF

FOR 2024 13

ACCOUNTS FOR: 0001 GENERAL FUND	ORIGINAL APPROP	TRANFRS/ ADJSTMTS	REVISED BUDGET	YTD EXPENDED	ENC/REQ	AVAILABLE BUDGET	PCT USED
7400 REPLACEMENT OF EQUIPMENT	300,000	69,590	369,590	216,597.46	7,495.55	145,496.64	60.6%
9100 MA PUBLIC TUITION	175,800	72,840	248,640	.00	248,640.00	.00	100.0%
9300 NON-PUBLIC TUITION	4,039,411	-2,336,171	1,703,240	974,485.60	1,570,120.08	-841,365.47	149.4%
9310 TUITION NON-PUBLIC RESIDENTIAL	530,561	-530,561	0	.00	.00	.00	.0%
9400 TUITION OUT COLLABORATAIVE	943,064	-71,056	872,008	364,920.07	489,250.18	17,838.19	98.0%
TOTAL GENERAL FUND	83,279,134	848,939	84,128,073	35,020,394.84	6,735,406.04	42,372,272.54	49.6%



## Natick Public Schools FY24 Grant Summary Report

FY23 GRANTS	Beginning						FY24 YTD Available	Grant Closed Date
	DESE Fund	Grant Awarded Amount	Balance to spend as of 7/1/23	FY24 Rev	FY24 Encumbered	FY24 Exp		
FY23 GRANTS (FEDERAL)								
FY23 Title I	305	\$464,052	220,046	56,062	13,462	137,573	69,011	
FY23 Title II	140	\$86,906	5,459	12,676	6,000	1,205	(1,746)	
FY23 Title III	180	\$25,166	23,535	-	-	-	23,535	
FY23 Title IV	309	\$14,772	14,772	59,302	-	-	14,772	
FY23 Evaluate & Select HQIM	161	\$36,070	2,971	32,463	-	2,971	-	8/22/2023
FY23 SPED IDEA 94-142 (Erin Miller)	240	\$1,373,398	326,734	303,543	4,164	597,200	(274,629)	
FY23 SPED ECSE (Erin Miller)	262	\$35,975	10,902	4,258	-	14,437	(3,535)	
FY23 GRANTS (PRIVATE)								
FY23 TIDES (Grace Magley)	N/A	\$4,500	3,600	-	-	-	3,600	

FY24 GRANTS	DESE	Grant Awarded	Remaining	FY24 Rev	FY24 Encumbered	FY24 Exp	FY24 YTD	Grant Closed
	Fund	Amount	Balance to spend as of 7/1/23					Date
FY24 GRANTS (FEDERAL)								
FY24 Title I -Just Awarded 1-4-24	305	\$210,028						
FY24 Title II - Just Awarded 1-4-24	140	\$77,194						
FY24 Title III -Just Awarded 1-4-24	180	\$32,777						
FY24 Title IV -Just Awarded 1-4-24	309	\$34,005						
FY24 SPED IDEA 94-142 - (Erin Miller) Just awarded	240	\$1,488,851	1,488,851	-	-	-	1,488,851	
FY24 SPED ECSE - (Erin Miller) Just awarded	262	\$36,934	36,934	-	-	-	36,934	
FY24 GRANTS (STATE)								
FY24 METCO	317	\$411,772	411,772	-	58,720	170,899	182,153	
FY24 Teacher Diversity	253	\$71,337	71,337	-	-	-	71,337	
FY24 0274 IEP-(Erin Miller) Just Awarded	274	\$40,424	40,424	-	-	-	40,424	
FY24 Approaches to Address Cellphone Use Pilot (Tim Luff)	329	\$3,375	3,375	-	-	-	3,375	
FY24 Earmark - METCO Late bus	1034	\$50,000	\$50,000				50,000	
FY24 Earmark - Profile of Educator ( PD)	1035	\$50,000	\$50,000				50,000	
Fy24 Earmark - Mental Health	1036	\$100,000	\$100,000				100,000	
FY24 Earmark - Online Tutoring	1037	\$100,000	\$100,000				100,000	

Jornal entries to post to cover between years

putting reclass JE to close out

posted in wrong grant should be FY23 Title II, awaiting correction

Most FY24 state grants have claims beeing submitted in Janaury

Run Date

1/5/2024 8:49

**Natick Public Schools**  
**FY24 Revolving Fund Summary**

ACCOUNT	G/L Fund #	Expecting Revenue Posting	7/1/23 Beginning Balance	FY24 Revenue	FY24 Encumbered	FY24 Expended	YTD FY24 Ending Balance
Circuit Breaker	0115	Y	2,750,334	-	2,092,404	1,454,333	(796,403)
Athletics	0102	Y	50,992	94,425	36,362	200,934	(91,879)
Team Funded Athletic Equipment	0137	Y	19,565	250	-	2,671	17,144
Athletic Transportation	0132		252	-	-	-	252
School Lunch	0012	Y	2,602,972	212,910	1,326,414	954,948	534,519
<b>School Choice and Other Tuitions:</b>							
Preschool Tuition	0119	Y	191,519	6,118	-	286,336	(88,699)
Foreign Student Tuition	0109		20,000	-	-	-	20,000
North Star Tuitions	0120	Y	13,148	10,800	-	25,711	(1,763)
Summer School	0105	Y	281,042	23,988	748	246,520	57,762
Summer Pre-School Program	0113		1,067	-	-	-	1,067
School Choice	0134	Y	265,528	9,379	-	140,383	134,524
Integrated Summer Program	0650	Y	50,760	-	505	96,700	(46,445)
<b>Total Tuitions</b>			823,065	50,285	1,253	795,649	76,447
<b>Other Local Receipts:</b>							
EASEP	0101	Y	47,203	400	1,814	12,077	33,712
School Bus Transportation	0103	Y	382,655	12,608	-	424,797	(29,534)
Rental of Facilities	0107	Y	22,453	-	6,694	113,752	(97,994)
School Vandalism	0108		4,312	-	-	-	4,312
After School Activities Program	0111	Y	938,025	92,142	58,298	932,580	39,289
NHS Testing Fund	0114		41,493	-	-	4,612	36,881
Guidance - Transcripts	0116		10,809	12	-	3,637	7,185
Instructional	0117		-	-	-	-	-
Health Services	0118		33,317	(355)	-	620	32,342
Photocopy Receipts	0121		-	-	-	-	-
Wall of Achievement	0122		4,624	-	-	-	4,624
Instrumental Music	0123	Y	110,877	6,214	4,359	177,310	(64,578)
Mini University	0124		9,419	-	-	-	9,419
Textbook-HS	0106		20,337	-	-	-	20,337
Textbooks-Wilson	0126		81	-	-	-	81
Textbooks-Lilja	0128		100	-	-	-	100
Textbooks-Memorial	0131		-	-	-	-	-
Laptop Fees	0133	Y	115,254	41,755	7,796	46,577	102,635
Parent Advisory Council	0135		3,806	-	-	-	3,806
Textile Recycling	0136		30,965	863	179	350	31,299
HS Laptop Program	0138		3,858	-	-	-	3,858
Medicaid- School Share	0110	Y	294,515	-	-	55,145	239,370
Natick BOKS	0139		12,084	-	-	8,254	3,831
<b>Total Other Local Receipts</b>			2,086,187	153,640	79,141	1,779,710	380,975
Total of above			8,333,367	511,510	3,535,575	5,188,246	121,055



Run Date

1/5/2024 8:49

# Natick Public Schools

## FY24 Revolving Fund Summary

Account	G/L Fund #	Expecting Revenue Posting	7/1/23 Beginning Balance	FY24 Revenue	FY24 Encumbered	FY24 Expended	YTD FY24 Ending Balance
Private Grants & Donations:							
Natick Public Schools	0602		9,985	-	-	-	9,985
Ben Hem School Donations	0603		24,615	-	6,295	387	17,933
Brown School Donations	0604		921	-	-	100	821
Johnson School Donations	0605		641	-	-	342	299
Lilja School Donations	0606		9,492	-	940	619	7,933
Memorial School Donations	0607		13,723	-	-	1,646	12,076
Kennedy School Donations	0608	Y	9,837	-	291	3,350	6,196
Wilson School Donations	0609	Y	40,805	-	866	888	39,051
Natick High School Donations	0610	Y	239,810	-	227	14,795	224,788
Pre-School Donations	0638		1,493	-	-	-	1,493
Friends and Family of Metco	0645		14,326	-	638	4,405	9,283
Business Professionals of America	0611		55	-	-	-	55
MWHC Health/Fitness	0620	06324	2,885	-	-	-	2,885
MCHCF / Anti Bullying	0625		2,056	-	-	-	2,056
Verizon PEG Grant	0626		-	-	-	-	-
METROWEST Peer Leadership	0629	06294	1,386	-	-	-	1,386
Underage Drinking Prevention	0631	06314	1,387	-	-	-	1,387
Health and Fitness	0632		5,221	-	-	-	5,221
MathWorks KMS Math Grant	0634		1,499	-	-	-	1,499
MWHC HEALTH DONATION	0639		4,636	-	-	-	4,636
MWHF EARLY RISERS SKILLS FOR SUCCESS	0640		-	-	-	-	-
MWHF EARLY RISERS SKILLS FOR SUCCESS	0647		-	-	-	-	-
MWHF DIVERSITY & SUPPORT	0649		4,500	-	-	-	4,500
EVERSOURCE	0651		69,866	-	-	-	69,866
MWHF GAME CHANGERS	0652		3,375	-	-	3,375	-
<b>Total</b>			<b>462,514</b>	<b>-</b>	<b>9,257</b>	<b>29,907</b>	<b>423,350</b>
NEF 2009-2010	0623		2,148	-	-	-	2,148
NEF 2014-2015	0642		2,348	-	-	-	2,348
NEF 2015-2016	0646		1,009	-	-	-	1,009
NEF	0648		48,013	-	2,417	16,910	28,686
<b>Total NEF Grants</b>			<b>53,518</b>	<b>-</b>	<b>2,417</b>	<b>16,910</b>	<b>34,191</b>
<b>Total Private Grants &amp; Donations</b>			<b>516,032</b>	<b>-</b>	<b>11,674</b>	<b>46,816</b>	<b>457,542</b>
<b>Grand Total</b>			<b>8,849,399</b>	<b>511,510</b>	<b>3,547,249</b>	<b>5,235,063</b>	<b>578,597</b>

# TOWN OF NATICK

## YTD REPORT - FY24 AFTER SCH CARE

FOR 2024 13

ACCOUNTS FOR:	ORIGINAL APPROP	TRANFRS/ ADJSTMTS	REVISED BUDGET	YTD ACTUAL	ENC/REQ	AVAILABLE BUDGET	PCT USE/COL
0111 AFTER SCHOOL PROGRAM							
01114 AFTER SCHOOL PROGRAM							
01114 432000 ASAP REV	0	0	0	3,887.00	.00	-3,887.00	100.0%*
TOTAL AFTER SCHOOL PROGRAM	0	0	0	3,887.00	.00	-3,887.00	100.0%
01115 AFTER SCHOOL PROGRAM							
01115 510000 SAL&WAGE	-641,854	0	-641,854	773,965.94	.00	-1,415,819.73	-120.6%*
01115 578300 OP EXP	1,593,926	1,883	1,595,809	87,483.80	62,997.78	1,445,326.95	9.4%
TOTAL AFTER SCHOOL PROGRAM	952,072	1,883	953,955	861,449.74	62,997.78	29,507.22	96.9%
TOTAL AFTER SCHOOL PROGRAM	952,072	1,883	953,955	865,336.74	62,997.78	25,620.22	97.3%
TOTAL REVENUES	0	0	0	3,887.00	.00	-3,887.00	
TOTAL EXPENSES	952,072	1,883	953,955	861,449.74	62,997.78	29,507.22	
PRIOR FUND BALANCE				952,071.74			
CHANGE IN FUND BALANCE - NET OF REVENUES/EXPENSES				-865,336.74			
REVISED FUND BALANCE				86,735.00			

# TOWN OF NATICK



## YTD REPORT - FY24 CB

FOR 2024 13								
ACCOUNTS FOR:	ORIGINAL	TRANFRS/	REVISED				AVAILABLE	PCT
0115 CIRCUI	APPRO	ADJSTMTS	BUDGET	YTD ACTUAL	ENC/REQ		BUDGET	USE/COL
01154 CIRCUI								
01154 468000 CB STATE	-3,695,042	0	-3,695,042	.00	.00	-3,695,042.00	.00%	
TOTAL CIRCUI	-3,695,042	0	-3,695,042	.00	.00	-3,695,042.00	.00%	
01155 CIRCUI								
01155 510000 SAL&WAGES	3,350,700	0	3,350,700	246,124.20	.00	3,104,576.11	7.3%	
01155 578300 OP EXP	-570,067	0	-570,067	1,181,132.07	2,092,404.25	-3,843,603.50	-574.2%	
TOTAL CIRCUI	2,780,633	0	2,780,633	1,427,256.27	2,092,404.25	-739,027.39	126.6%	
TOTAL CIRCUI	-914,409	0	-914,409	1,427,256.27	2,092,404.25	-4,434,069.39	-384.9%	
TOTAL REVENUES	-3,695,042	0	-3,695,042	.00	.00	-3,695,042.00		
TOTAL EXPENSES	2,780,633	0	2,780,633	1,427,256.27	2,092,404.25	-739,027.39		
PRIOR FUND BALANCE				2,780,633.13				
CHANGE IN FUND BALANCE - NET OF REVENUES/EXPENSES				-1,427,256.27				
REVISED FUND BALANCE				1,353,376.86				



---

**ITEM TITLE:** FY25 Budget: Preliminary Report  
**DATE:**  
**ITEM TYPE:**  
**ITEM SUMMARY:**  
**BACKGROUND INFORMATION:**  
**RECOMMENDATION:**

---

---

**ITEM TITLE:** FY25 Technology Department Budget Request  
**DATE:**  
**ITEM TYPE:**  
**ITEM SUMMARY:**  
**BACKGROUND INFORMATION:**  
**RECOMMENDATION:**

---

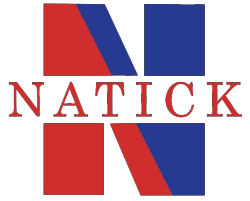
**ATTACHMENTS:**

<b>Description</b>	<b>File Name</b>	<b>Type</b>
FY25 Technology Department Budget Request	FY25_Tech_Budget_v1.pdf	Cover Memo

# NATICK PUBLIC SCHOOLS FY25 TECHNOLOGY BUDGET REQUEST JANUARY 22, 2024

Dennis Roche, CISA, CISM, CCTL  
Chief Technology Officer





# AGENDA

1. Annual Technology Reports
2. School Technology FY25 Operating Budget Request
3. School Technology 5 Year Capital Plan
4. Technology Staffing Plan - Town & Schools



# ANNUAL TECHNOLOGY REPORTS



## INVENTORY SUMMARY & RECONCILIATION OF 2022 TO 2023

Total number of devices as of 12/31/2022	9,879
Number of computers added in 2023	812
Number of computers retired YTD in 2023	(2,064)
Additional computers to retire in 2023	(331)
Verified assets found during audits	8
<b>Total number of devices as of 12/31/2023</b> <b>(Decrease of 1,575)</b>	<b>8304</b>



# INVENTORY SUMMARY BY LOCATION

## Active Devices by Type & Location

Category	Location													
	BEN	BRO	DPW	EST	FCC	JOH	KEN	LIL	MEM	NHS	OOD	PreK	TWN	WIL
Chromebooks	220	191			1	81	993	181	172	2196	1	1	11	848
Chromebox	4					1	229	3	2	24			2	3
Desktops	6	2		1	1	2	40	2	8	158		3	2	26
iPad	191	218	4	33	8	25	170	194	157	112	15	49	9	47
Laptop	114	78	4	6	6	28	188	82	64	805	1	24	50	207
<b>Grand Total</b>	<b>535</b>	<b>489</b>	<b>8</b>	<b>40</b>	<b>16</b>	<b>137</b>	<b>1620</b>	<b>462</b>	<b>403</b>	<b>3295</b>	<b>17</b>	<b>77</b>	<b>74</b>	<b>1131</b>
% of Total Devices	6.4%	5.9%	0.1%	0.5%	0.2%	1.6%	19.5%	5.6%	4.9%	39.7%	0.2%	0.9%	0.9%	13.6%

## Active Devices by Year Purchased & Location

Year Purchased	Location													
	BEN	BRO	DPW	EST	FCC	JOH	KEN	LIL	MEM	NHS	OOD	PreK	TWN	WIL
2012		1												
2014	2						3			3			1	1
2015	1	2					4	1		2		1		
2016	3	14		3	3		7			5			4	3
2017	19	26		7	4	4	19	16	9	114		3	2	22
2018	17	5		3	4	8	50	43	17	278	2	5	6	62
2019	41	21		3	3	6	53	33	31	512	2	16	7	100
2020	23	27		1	1	5	350	14	5	843			5	253
2021	38	36	2	3	1	15	858	27	15	341	3	10	27	426
2022	371	339	4	18		99	223	307	314	562	6	34	11	238
2023	20	18	2	2			53	21	12	635	4	8	11	26
<b>Grand Total</b>	<b>535</b>	<b>489</b>	<b>8</b>	<b>40</b>	<b>16</b>	<b>137</b>	<b>1620</b>	<b>462</b>	<b>403</b>	<b>3295</b>	<b>17</b>	<b>77</b>	<b>74</b>	<b>1131</b>





# INVENTORY SUMMARY BY YEAR PURCHASED

## Active Devices by Type & Year Purchased

Category	Year Purchased											Grand Total
	2012	2014	2015	2016	2017	2018	2019	2020	2021	2022	2023	
Chromebooks					35	224	152	1452	1013	1570	450	4896
Chromebox					2	2		24	240			268
Desktops			1	3	13		69	1	104		60	251
iPad		9	9	28	145	49	41	41	155	708	47	1232
Laptop	1	1	1	11	50	225	566	9	290	248	255	1657
<b>Grand Total</b>	<b>1</b>	<b>10</b>	<b>11</b>	<b>42</b>	<b>245</b>	<b>500</b>	<b>828</b>	<b>1527</b>	<b>1802</b>	<b>2526</b>	<b>812</b>	<b>8304</b>
% of Total Devices	0.01%	0.1%	0.1%	0.5%	3.0%	6.0%	10.0%	18.4%	21.7%	30.4%	9.8%	

## Active Devices by Location & Year Purchased

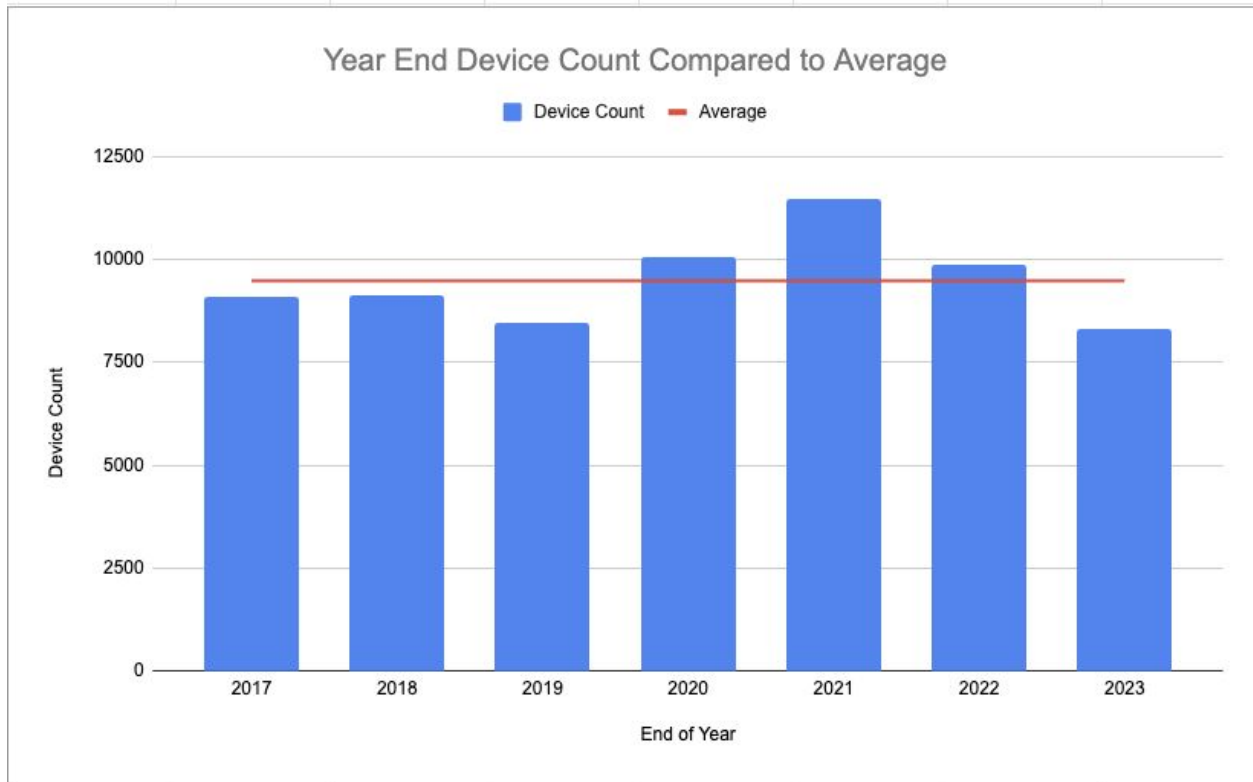
Location	Purchase Year											Grand Total
	2012	2014	2015	2016	2017	2018	2019	2020	2021	2022	2023	
BEN		2	1	3	19	17	41	23	38	371	20	535
BRO	1		2	14	26	5	21	27	36	339	18	489
DPW									2	4	2	8
EST				3	7	3	3	1	3	18	2	40
FCC				3	4	4	3	1	1			16
JOH					4	8	6	5	15	99		137
KEN		3	4	7	19	50	53	350	858	223	53	1620
LIL			1		16	43	33	14	27	307	21	462
MEM					9	17	31	5	15	314	12	403
NHS		3	2	5	114	278	512	843	341	562	635	3295
OOD						2	2		3	6	4	17
PreK			1		3	5	16		10	34	8	77
TWN		1		4	2	6	7	5	27	11	11	74
WIL		1		3	22	62	100	253	426	238	26	1131
<b>Grand Total</b>	<b>1</b>	<b>10</b>	<b>11</b>	<b>42</b>	<b>245</b>	<b>500</b>	<b>828</b>	<b>1527</b>	<b>1802</b>	<b>2526</b>	<b>812</b>	<b>8304</b>

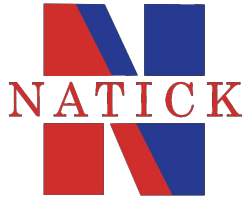




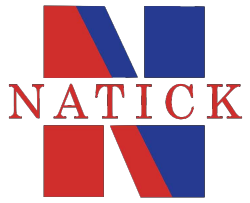
# DISTRICT DEVICE COUNT TRENDS

End of Year	2017	2018	2019	2020	2021	2022	2023
Device Count	9,095	9,117	8,468	10,049	11,455	9,879	8,304



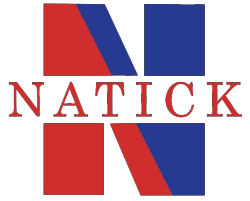


# **FY25 TECHNOLOGY BUDGET REQUEST**



# GOALS FOR FY25 TECHNOLOGY BUDGET

1. Provide incoming 5th and 9th graders with Chromebooks.
2. Replace and refresh obsolete laptops and desktops for all faculty & staff. Increased this amount to reflect more accurate FTE data from Human Resources.
3. Continue to adjust the AV Budget to support the repair and maintenance of all district wide AV equipment.
4. Continue to transition the ongoing costs of the Kennedy Data Center into the Operating Budget.



# FY25 TECHNOLOGY BUDGET REQUEST

Operating Budget			
Objective	FY24	FY25	Variance
Supplies	\$3,500	\$3,500	-
Equipment Replacement	\$441,589	\$650,000	\$208,411
Equipment (New)	-	-	-
AV	\$30,000	\$50,000	\$20,000
Purchase of Services	\$362,800	\$397,050	\$34,250
Software	\$155,100	\$141,600	(\$13,500)
LAN/WAN Maintenance	\$281,000	\$311,000	\$30,000
System Wide - Copiers	\$300,000	\$300,000	-
	=====	=====	=====
Total	\$1,573,989	\$1,853,150	\$279,161



# EQUIPMENT REPLACEMENT - INCREASE OF \$208,411

## SUSTAINABILITY PLAN

	Life Cycle	FY25 July 1, 2024	FY26 July 1, 2025	FY27 July 1, 2026	FY28 July 1, 2027	FY29 July 1, 2028	FY30 July 1, 2029
<b>High School Student Device Sustainability (Chromebooks 3 Year Lease):</b>							
Incoming Freshman FY24	4 Years	\$60,000.00	\$60,000.00	N/A	N/A	N/A	N/A
Incoming Freshman FY25	4 Years	\$60,000.00	\$60,000.00	\$60,000.00	N/A	N/A	N/A
Incoming Freshman FY26	4 Years	N/A	\$60,000.00	\$60,000.00	\$60,000.00	N/A	N/A
Incoming Freshman FY27	4 Years	N/A	N/A	\$60,000.00	\$60,000.00	\$60,000.00	N/A
Incoming Freshman FY28	4 Years	N/A	N/A	N/A	\$60,000.00	\$60,000.00	\$60,000.00
Incoming Freshman FY29	4 Years	N/A	N/A	N/A	N/A	\$60,000.00	\$60,000.00
Incoming Freshman FY30	4 Years	N/A	N/A	N/A	N/A	N/A	\$60,000.00
<b>High School Labs &amp; Building Systems:</b>							
Video Editing Lab - 3 Year Lease	4 Years	\$0.00	\$14,399.40	\$14,399.40	\$14,399.40	\$0.00	\$14,399.40
Web Design Lab (Cash Purchase)	4 Years	\$0.00	\$0.00	\$0.00	\$51,000.00	\$0.00	\$0.00
Game Design & Art Lab (Cash Purchase)	4 Years	\$0.00	\$0.00	\$0.00	\$51,000.00	\$0.00	\$0.00
Foreign Language Lab - 3 Year Lease	4 Years	\$0.00	\$7,189.40	\$7,189.40	\$7,189.40	\$0.00	\$7,189.40
<b>MS Chromebooks for Students : (Chromebooks 3 Year Lease)</b>							
Incoming 5th Graders FY24	4 Years	\$60,000.00	\$60,000.00	N/A	N/A	N/A	N/A
Incoming 5th Graders FY25	4 Years	\$60,000.00	\$60,000.00	\$60,000.00	N/A	N/A	N/A
Incoming 5th Graders FY26	4 Years	N/A	\$60,000.00	\$60,000.00	\$60,000.00	N/A	N/A
Incoming 5th Graders FY27	4 Years	N/A	N/A	\$60,000.00	\$60,000.00	\$60,000.00	N/A
Incoming 5th Graders FY28	4 Years	N/A	N/A	N/A	\$60,000.00	\$60,000.00	\$60,000.00
Incoming 5th Graders FY29	4 Years	N/A	N/A	N/A	N/A	\$60,000.00	\$60,000.00
<b>Middle School Labs &amp; Building Systems:</b>							
Kennedy Video Editing Lab (IMacs - Library)	4 Years	\$0.00	\$51,000.00	\$0.00	\$0.00	\$0.00	\$51,000.00
Kennedy MIDI Lab (Apple Laptops)	4 Years	\$0.00	\$30,000.00	\$0.00	\$0.00	\$0.00	\$30,000.00
Replace Classroom & Digital Signage Chromeboxes (Kennedy)	4 Years		\$90,000.00				\$90,000.00
<b>Elementary Devices for Students :</b>							
Elementary Schools (Re-fresh old aging devices) Refreshed to start FY23	4 Years	\$0.00	\$0.00	\$200,000.00	\$200,000.00	\$200,000.00	\$0.00
Elementary Libraries - Shared Ipad for student use	4 Years	\$60,000.00				\$60,000.00	
<b>SPED</b>							
Student Devices	4 Years	\$20,000.00	\$20,000.00	\$20,000.00	\$20,000.00	\$20,000.00	\$20,000.00
<b>Teacher Laptop Sustainability: (Laptops 3 Year Lease)</b>							
Teacher Laptop Replacements - Replace 367 each year	3 Years	\$130,000.00	\$130,000.00	\$130,000.00	\$130,000.00	\$130,000.00	\$130,000.00
Teacher Laptop Replacements - Replace 250 each year	3 Years	\$100,000.00	\$130,000.00	\$130,000.00	\$130,000.00	\$130,000.00	\$130,000.00
Teacher Laptop Replacements - Replace 250 each year	3 Years	\$100,000.00	\$100,000.00	\$130,000.00	\$130,000.00	\$130,000.00	\$130,000.00
<b>Total Cost:</b>		<b>\$650,000.00</b>	<b>\$932,588.80</b>	<b>\$991,588.80</b>	<b>\$1,093,588.80</b>	<b>\$1,030,000.00</b>	<b>\$902,588.80</b>

[Link to Sustainability Plan](#)





# SUMMARY OF CHANGES BY ACCOUNT

1. **AV Account - Increase of \$20,000**
  - a. Adjusted up to support aging equipment:
    - i. Maintenance of NHS & Kennedy Classroom Audio Systems
    - ii. Repairs or replacement of Flat Panel Displays at NHS & Kennedy
    - iii. Repairs or replacement of Projectors at Wilson & Elementary Schools
2. **Purchase of Services - Increase of \$32,250**
  - a. Placeholder for potential startup costs to replace our Website
  - b. Added PowerSchool Attendance Plugin
  - c. Enhanced our Security Tools
3. **Software Account - Decrease of (\$ 20,500)**
  - a. Reduced number of software licenses for some of our tools
4. **Lan/Wan Maintenance - Increase of \$ 30,000**
  - a. Added two Kennedy Data Center Items to Operating Budget
    - i. Core Router Annual Support
    - ii. Backup System Annual Support



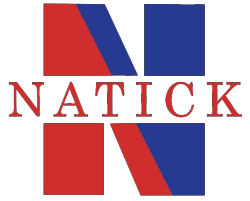
# SCHOOL TECHNOLOGY CAPITAL PLAN



# SCHOOL TECHNOLOGY CAPITAL PLAN

Infrastructure Items	Life Cycle	Fall 2024	Fall 2025	Fall 2026	Fall 2027	Fall 2028
		FY25	FY26	FY27	FY28	FY29
		Erate Budget \$796699.75				
		7/1/24 - 6/30/25	7/1/25 - 6/30/26	7/1/27 - 6/30/28	7/1/28 - 6/30/29	7/1/29 - 6/30/30
Core Router (NHS & District Level Traffic)	10 Yrs					
Core Router (Kennedy & District Level Traffic)	10 Yrs					
Building Routers (Enhanced layer3 switches)	10 Yrs			\$60,000.00		
Firewalls (NHS)	7 Yrs					
Firewalls (Kennedy)	7 Yrs				\$100,000.00	
Wireless (District Wide)	10 Yrs	\$400,000.00				
Blade Servers (NHS)	15 Yrs					
Blade Servers (Kennedy)	15 Yrs					
Edge Switches (All Schools - except Kennedy)	15 Yrs	\$100,000.00	\$150,000.00			
Edge Switches (Kennedy only)	15 Yrs					
UPS-Room Based (Kennedy)	10 Yrs					
Backup Server (NHS)	8 Yrs					
Backup Server (Kennedy)	8 Yrs					\$75,000.00
Radio Repeaters (District Wide)	15 Yrs					
Classroom Audio Systems (NHS)	10 Yrs		\$150,000.00			
Projector Replacements by School	12 Yrs		\$100,000.00	\$100,000.00	\$100,000.00	\$85,000.00
			Brown	BenHem	Lilja	Memorial
Totals		\$500,000.00	\$400,000.00	\$160,000.00	\$200,000.00	\$160,000.00

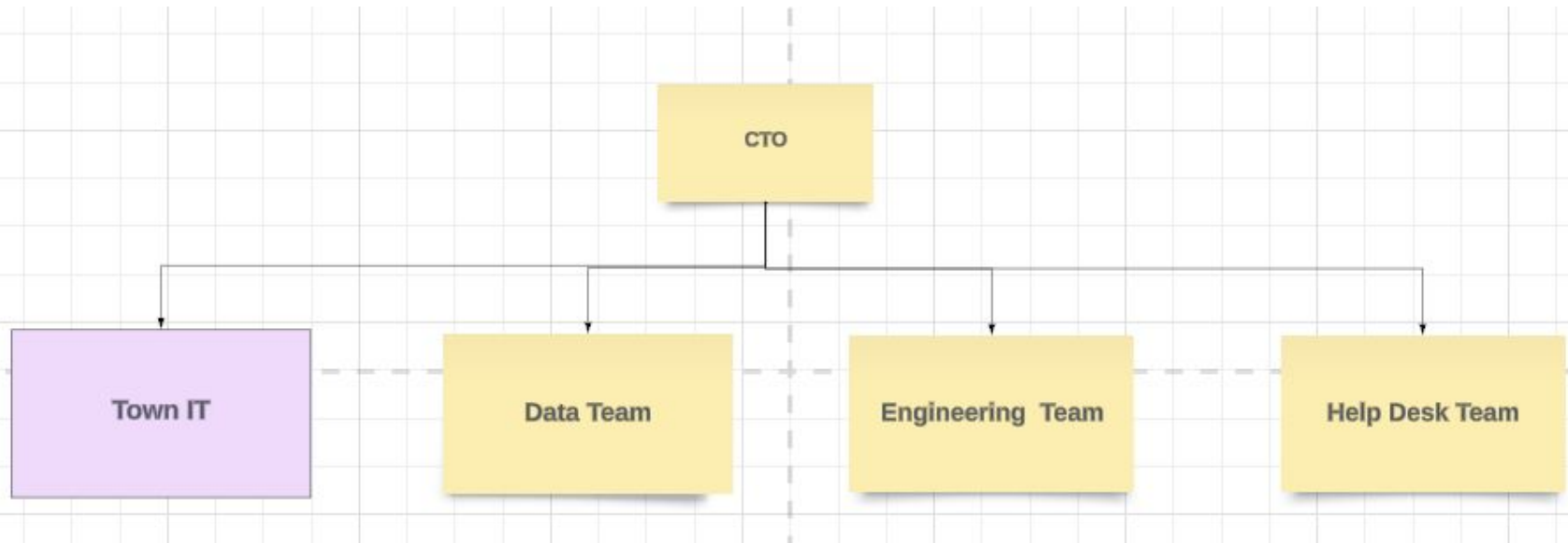
[Link to Capital Plan](#)



# TECHNOLOGY STAFFING PLAN TOWN & SCHOOLS



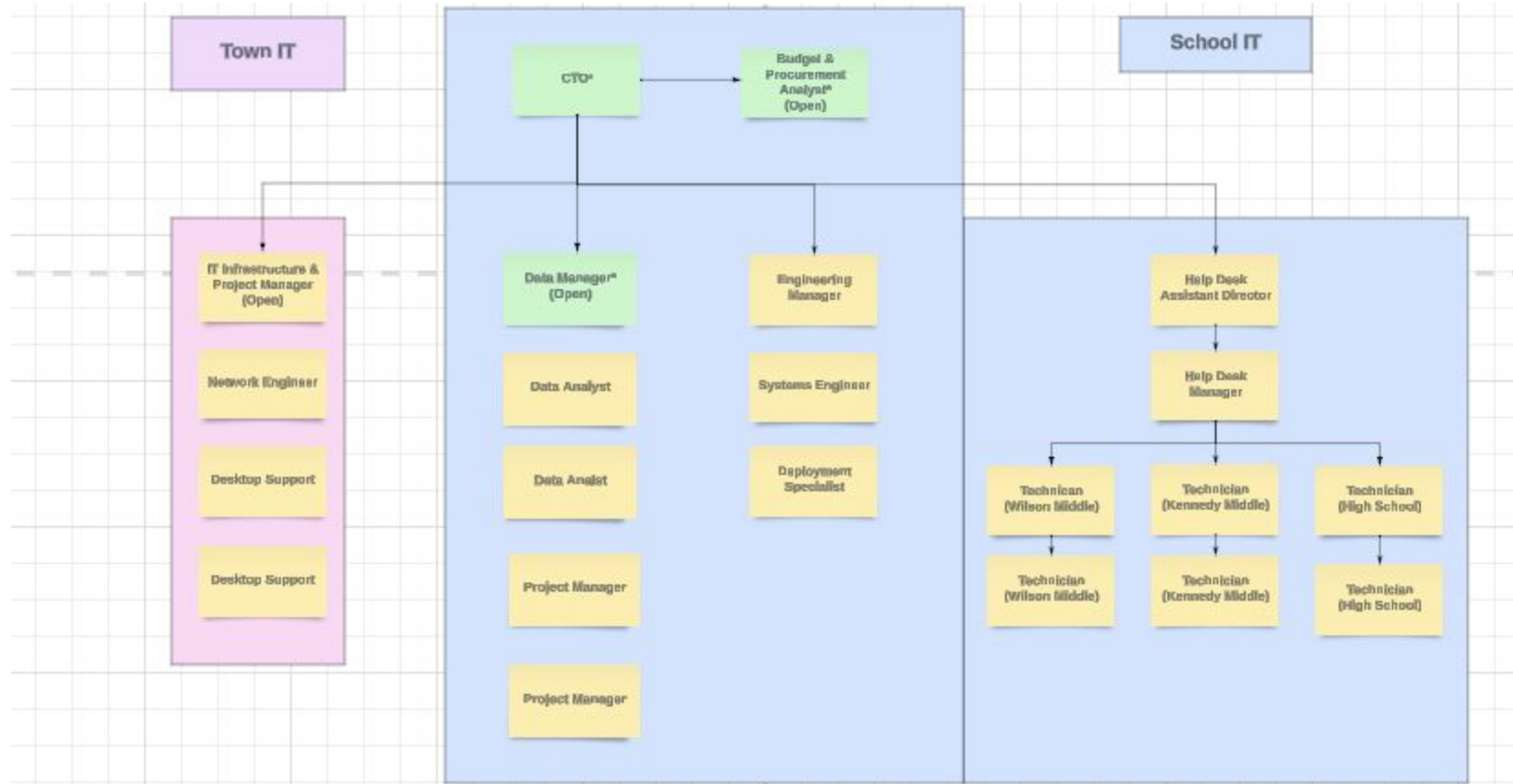
# TECHNOLOGY STAFFING PLAN







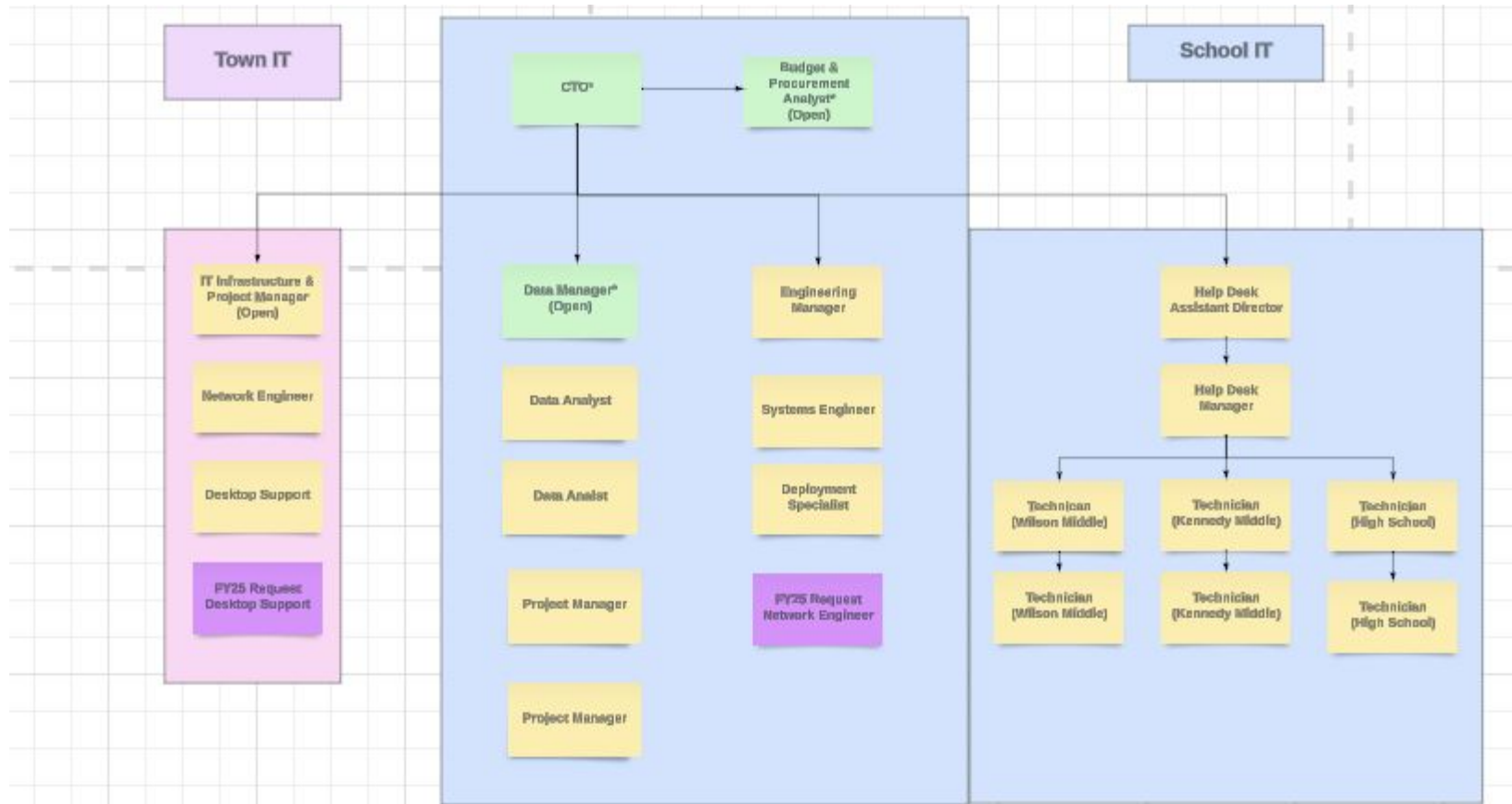
# TECHNOLOGY STAFFING PLAN



\*Positions starred in green have Town and School duties and responsibilities.



# TECHNOLOGY STAFFING PLAN



\*Positions starred in green have Town and School duties and responsibilities. Positions in dark purple are FY25 requests.

---

**ITEM TITLE:** Approve the 2024-2025 School Calendar  
**DATE:**  
**ITEM TYPE:**  
**ITEM SUMMARY:**  
**BACKGROUND INFORMATION:**  
**RECOMMENDATION:**

---

**ATTACHMENTS:**

Description	File Name	Type
Approval of the 2024/2025 School Calendar - Option 2	option_2_2024_2025_school_calendar_option_2_revised_(1).pdf	Cover Memo
Approval of the 2024/2025 School Calendar - Option 3	option_3_24_25_School_Calendar_-_Option_3_(1).pdf	Cover Memo

# Natick Public Schools

## 2024-2025 School Calendar

August 2024						
Su	M	Tu	W	Th	F	Sa
				1	2	3
4	5	6	7	8	9	10
11	12	13	14	15	16	17
18	19	20	21	22	23	24
25	26	27	28	29	30	31

(3 days)

November 2024						
Su	M	Tu	W	Th	F	Sa
					1	2
3	4	5	6	7	8	9
10	11	12	13	14	15	16
17	18	19	20	21	22	23
24	25	26	27	28	29	30

(16 days)

February 2025						
Su	M	Tu	W	Th	F	Sa
						1
2	3	4	5	6	7	8
9	10	11	12	13	14	15
16	17	18	19	20	21	22
23	24	25	26	27	28	

(15 days)

May 2025						
Su	M	Tu	W	Th	F	Sa
				1	2	3
4	5	6	7	8	9	10
11	12	13	14	15	16	17
18	19	20	21	22	23	24
25	26	27	28	29	30	31

(21 days)

September 2024						
Su	M	Tu	W	Th	F	Sa
1	2	3	4	5	6	7
8	9	10	11	12	13	14
15	16	17	18	19	20	21
22	23	24	25	26	27	28
29	30					

(20 days)

December 2024						
Su	M	Tu	W	Th	F	Sa
1	2	3	4	5	6	7
8	9	10	11	12	13	14
15	16	17	18	19	20	21
22	23	24	25	26	27	28
29	30	31				

(15 days)

March 2025						
Su	M	Tu	W	Th	F	Sa
						1
2	3	4	5	6	7	8
9	10	11	12	13	14	15
16	17	18	19	20	21	22
23	24	25	26	27	28	29
30	31					

(20 days)

June 2025						
Su	M	Tu	W	Th	F	Sa
1	2	3	4	5	6	7
8	9	10	11	12	13	14
15	16	17	18	19	20	21
22	23	24	25	26	27	28
29	30					

(13 days)

October 2024						
Su	M	Tu	W	Th	F	Sa
		1	2	3	4	5
6	7	8	9	10	11	12
13	14	15	16	17	18	19
20	21	22	23	24	25	26
27	28	29	30	31		

(21 days)

January 2025						
Su	M	Tu	W	Th	F	Sa
			1	2	3	4
5	6	7	8	9	10	11
12	13	14	15	16	17	18
19	20	21	22	23	24	25
26	27	28	29	30	31	

(21 days)

April 2025						
Su	M	Tu	W	Th	F	Sa
		1	2	3	4	5
6	7	8	9	10	11	12
13	14	15	16	17	18	19
20	21	22	23	24	25	26
27	28	29				

(15 days)

NOTE: For option 2 please refer to December, April and June dates. December 23, December 24 and April 18 would be closed making June 18 or 26 the last day of school depending on snow days.

- Schools Closed
- Early Release Day for ALL STUDENTS
- Early Release Day for PreK, Elementary and Middle Schools Only
- Early Release Day for PreK and Elementary Only

- Aug 26-27 Faculty Return and Meetings (all buildings are closed to public)
- Aug 28 First Day of School for students
- Sep 2 Labor Day - Closed
- Sep 18 Early Release Day
- Oct 3-4 Rosh Hashana - Closed Oct 3 (observed on Oct 4)
- Oct 12 Yom Kippur - Observed
- Oct 14 Columbus Day/Indigenous People's Day - Closed
- Oct 23 Early Release Day
- Nov 1 Diwali - Closed
- Nov 5 NILS/Election Day - Closed
- Nov 6 Early Release Day - PreK and Elementary ONLY
- Nov 11 Veteran's Day - Closed
- Nov 20 Early Release Day - PreK, Elementary & Middle Schools ONLY
- Nov 27 Early Release Day
- Nov 28-29 Thanksgiving - Closed
- Dec 11 Early Release Day
- Dec 23-31 Winter Break
- Jan 1 New Year's Day - Closed

- School Closed for Kindergarten only
- First and Last Day of School
- Religious & Cultural Observance

NOTE: Jewish and Muslim holidays begin at sundown the day before.

- Jan 15 Early Release Day
- Jan 20 Martin Luther King Day - Closed
- Jan 29 Lunar New Year - Observed
- Feb 5 Early Release Day
- Feb 17-21 February Vacation - Closed
- March 12 Early Release Day
- March 31 Eid al-fitr - Closed
- Apr 2 Early Release Day - PreK and Elementary ONLY
- Apr 9 Early Release Day
- Apr 18 Good Friday/Orthodox Good Friday - Closed
- Apr 20 Easter/Orthodox Easter - Observed
- Apr 21-25 April Vacation - Closed
- May 2 School Closed for Kindergarten ONLY
- May 14 Early Release Day
- May 26 Memorial Day - Closed
- June 7 Eid al-Adha - Observed
- June 18 Early Release - Last Day of School (no snow days)
- June 19 Juneteenth Day - Closed
- June 26 Early Release - Last Day of School (5 snow days)



# Natick Public Schools

## 2024-2025 School Calendar

August 2024						
Su	M	Tu	W	Th	F	Sa
				1	2	3
4	5	6	7	8	9	10
11	12	13	14	15	16	17
18	19	20	21	22	23	24
25	26	27	28	29	30	31

(3 days)

November 2024						
Su	M	Tu	W	Th	F	Sa
					1	2
3	4	5	6	7	8	9
10	11	12	13	14	15	16
17	18	19	20	21	22	23
24	25	26	27	28	29	30

(16 days)

February 2025						
Su	M	Tu	W	Th	F	Sa
						1
2	3	4	5	6	7	8
9	10	11	12	13	14	15
16	17	18	19	20	21	22
23	24	25	26	27	28	

(15 days)

May 2025						
Su	M	Tu	W	Th	F	Sa
				1	2	3
4	5	6	7	8	9	10
11	12	13	14	15	16	17
18	19	20	21	22	23	24
25	26	27	28	29	30	31

(21 days)

September 2024						
Su	M	Tu	W	Th	F	Sa
1	2	3	4	5	6	7
8	9	10	11	12	13	14
15	16	17	18	19	20	21
22	23	24	25	26	27	28
29	30					

(20 days)

December 2024						
Su	M	Tu	W	Th	F	Sa
1	2	3	4	5	6	7
8	9	10	11	12	13	14
15	16	17	18	19	20	21
22	23	24	25	26	27	28
29	30	31				

(15 days)

March 2025						
Su	M	Tu	W	Th	F	Sa
						1
2	3	4	5	6	7	8
9	10	11	12	13	14	15
16	17	18	19	20	21	22
23	24	25	26	27	28	29
30	31					

(20 days)

June 2025						
Su	M	Tu	W	Th	F	Sa
1	2	3	4	5	6	7
8	9	10	11	12	13	14
15	16	17	18	19	20	21
22	23	24	25	26	27	28
29	30					

(12 days)

October 2024						
Su	M	Tu	W	Th	F	Sa
		1	2	3	4	5
6	7	8	9	10	11	12
13	14	15	16	17	18	19
20	21	22	23	24	25	26
27	28	29	30	31		

(21 days)





January 2025						
Su	M	Tu	W	Th	F	Sa
			1	2	3	4
5	6	7	8	9	10	11
12	13	14	15	16	17	18
19	20	21	22	23	24	25
26	27	28	29	30	31	

(21 days)




April 2025						
Su	M	Tu	W	Th	F	Sa
		1	2	3	4	5
6	7	8	9	10	11	12
13	14	15	16	17	18	19
20	21	22	23	24	25	26
27	28	29				

(16 days)

NOTE: For option 3 please refer to December, April and June dates. December 23 & December 24 school would be closed and April 18 would be an early release day making June 17 or 25 the last day of school depending on snow days.

	Schools Closed
	Early Release Day for ALL STUDENTS
	Early Release Day for PreK, Elementary and Middle Schools Only
	Early Release Day for PreK and Elementary Only

Aug 26-27	Faculty Return and Meetings (all buildings are closed to public)
Aug 28	First Day of School for students
Sep 2	Labor Day - Closed
Sep 18	Early Release Day
Oct 3-4	Rosh Hashana - Closed Oct 3
Oct 12	Yom Kippur - Observed
Oct 14	Columbus Day/Indigenous People's Day - Closed
Oct 23	Early Release Day
Nov 1	Diwali - Closed
Nov 5	NILS /Election Day - Closed
Nov 11	Veteran's Day - Closed
Nov 13	Early Release Day - PreK and Elementary ONLY
Nov 20	Early Release Day - PreK, Elementary & Middle Schools ONLY
Nov 27	Early Release Day
Nov 28-29	Thanksgiving - Closed
Dec 11	Early Release Day
Dec 23 - 31	Winter Break
Jan 1	New Year's Day - Closed

	School Closed for Kindergarten only
	First and Last Day of School
	Religious & Cultural Observance

NOTE: Jewish and Muslim holidays begin at sundown the day before.

Jan 15	Early Release Day
Jan 20	Martin Luther King Day - Closed
Jan 29	Lunar New Year - Observed
Feb 5	Early Release Day
Feb 17-21	February Vacation - Closed
March 12	Early Release Day
March 31	Eid al-fitr - Closed
Apr 2	Early Release Day - PreK and Elementary ONLY
Apr 9	Early Release Day
Apr 18	Good Friday/Orthodox Good Friday - Early Release Day
Apr 20	Easter/Orthodox Easter - Observed
Apr 21-25	April Vacation - Closed
May 2	School Closed for Kindergarten ONLY
May 14	Early Release Day
May 26	Memorial Day - Closed
June 7	Eid al-Adha - Observed
June 17	Early Release - Last Day of School (no snow days)
June 19	Juneteenth Day - Closed
June 25	Early Release - Last Day of School (5 snow days)



---

**ITEM TITLE:** Approve Update to Non-Representative Salary Schedule

**DATE:**

**ITEM TYPE:**

**ITEM SUMMARY:**

**BACKGROUND INFORMATION:**

**RECOMMENDATION:**

---

---

<b>ITEM TITLE:</b>	Approve Transportation Contract 2024-2027 with Options to Extend
<b>DATE:</b>	
<b>ITEM TYPE:</b>	
<b>ITEM SUMMARY:</b>	
<b>BACKGROUND INFORMATION:</b>	
<b>RECOMMENDATION:</b>	

---

---

**ITEM TITLE:** Approve Update on the Permanent Superintendent Search

**DATE:**

**ITEM TYPE:**

**ITEM SUMMARY:**

**BACKGROUND INFORMATION:**

**RECOMMENDATION:**

---